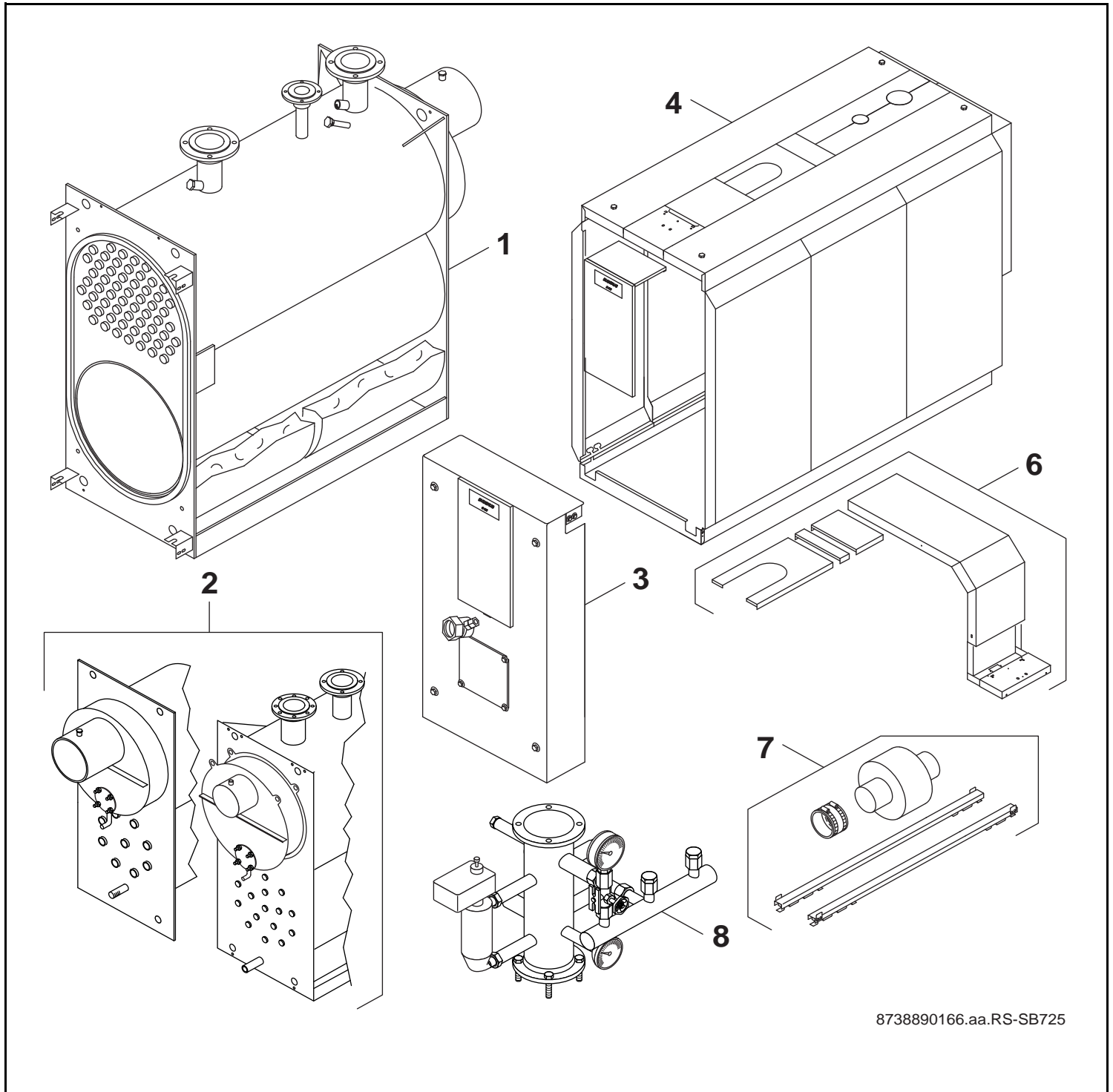


Logano plus SB725



8738890166.aa.RS-SB725

Buderus

Wichtige Hinweise

- Ersatzteile dürfen nur von einem zugelassenen Installateur eingebaut werden!
- Im Anhang finden Sie:
 - die Übersetzungen aller verwendeten Teilebezeichnungen
 - eine Übersicht der Gerätetypen und Länder, für die diese Ersatzteilliste gilt.

Important notes

- The spare parts may only be installed by an approved installer!
- In the appendix you will find:
 - a list of translations of the names of all parts used
 - a list of the models and countries to which this spare parts list applies.

Indications importantes

- L'installation des pièces de rechange doit être effectuée par un professionnel qualifié!
- Veuillez trouver en annexe:
 - les traductions de toutes les désignations des pièces utilisées
 - une vue globale des types de chaudières et des pays pour lesquels la présente liste des pièces de rechange est valable.

Informações importantes

- Peças de substituição só podem ser montadas por um técnico credenciado!
- Em anexo encontra:
 - as traduções das designações de todas as peças utilizadas.
 - lista dos aparelhos e países para os quais esta lista de peças de substituição é válida.

Avvertenze importanti

- Le parti di ricambio possono essere montate esclusivamente da personale qualificato ed in possesso dei requisiti tecnico-professionali!
- In appendice sono reperibili:
 - traduzione di ogni descrizione relativa alle varie parti di ricambio
 - elenco di sigle e codici, corrispondente ai vari paesi di destinazione.

Indicaciones importantes

- Los repuestos solamente deben ser montados por los servicios técnicos oficiales de la marca!
- En el anexo podrá encontrar:
 - la traducción de todas las denominaciones de piezas empleadas
 - una relación de los tipos de aparato y países en los que se aplica esta lista de repuestos.

Belangrijke aanwijzing

- Onderdelen mogen alleen door een erkend installateur worden vervangen!
- In de bijlage vindt u:
 - de vertalingen van de gebruikte onderdelentekeningen
 - een overzicht van toesteltypen en de landen waarvoor deze onderdelenlijst bedoeld is.

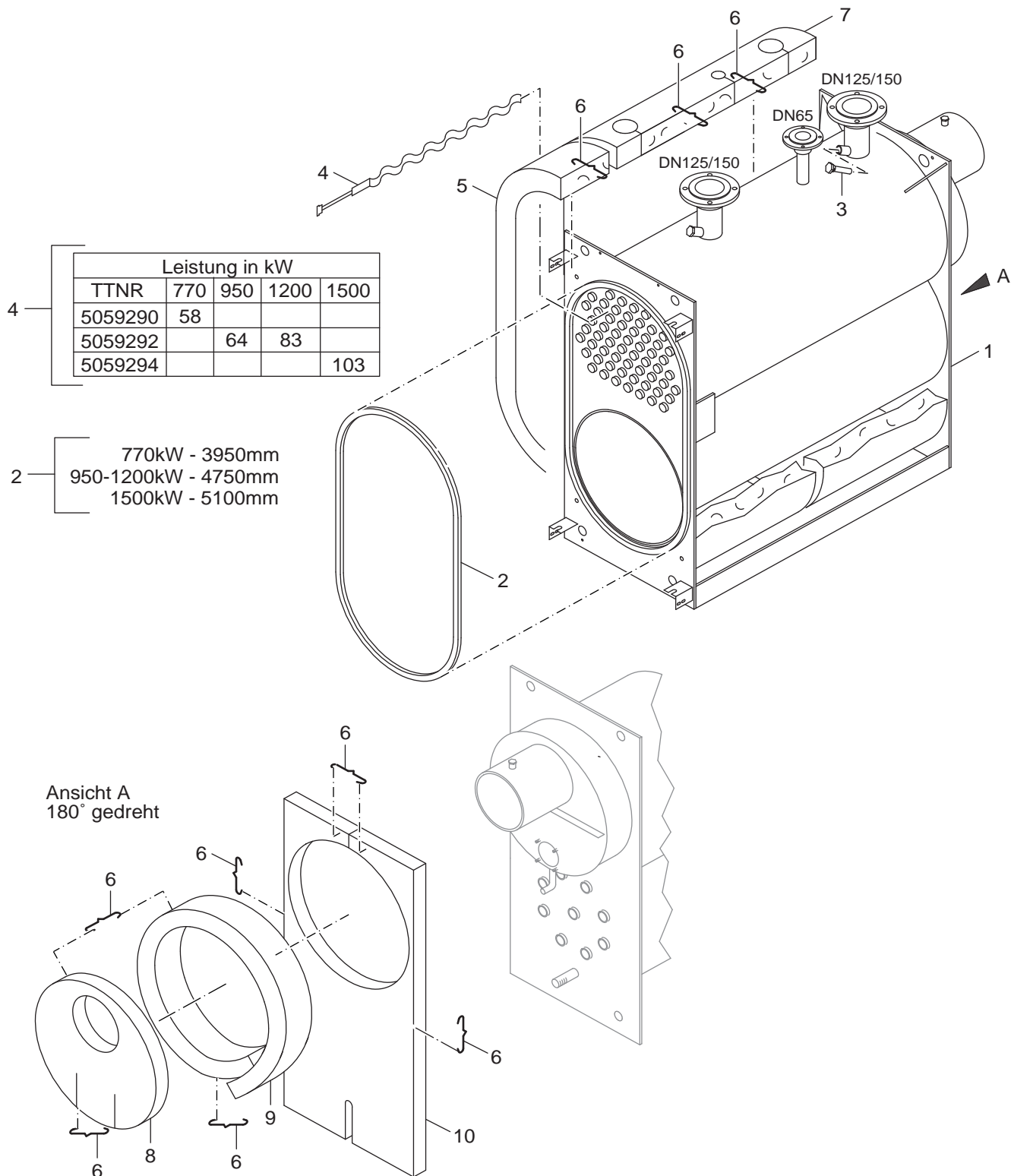
Önemli Bilgiler

- Yedek parçalar sadece yetkili tesisatçılar tarafından monte edilebilir!
- Aşağıdaki bilgileri ekli olarak bulabilirsiniz:
 - Tüm kullanılan parça tanımlarının tercümelemleri
 - Bu yedek parça listesinin geçerli olduğu tüm cihaz çeşitleri ve ülkelerin özeti.

Ersatzteilliste
Spare parts list

Liste des pièces de rechange
Lista parti di ricambio

Onderdelenlijst



8738890167.aa.RS-Kesselblock SB725

1

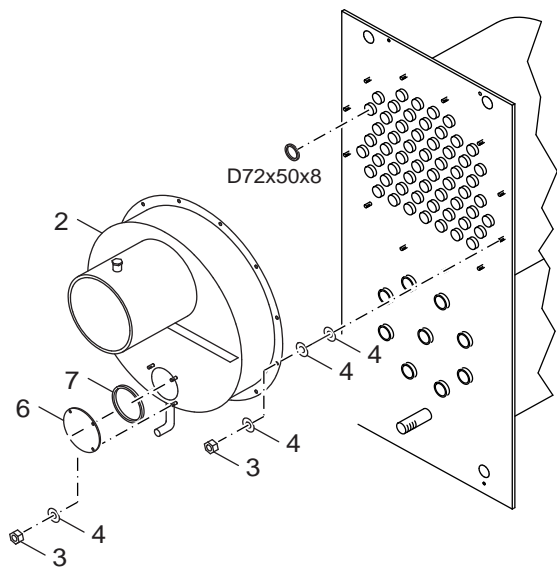
Kesselblock SB725
Boiler block SB725
Corps de chauffe SB725
Corpo caldaia SB725
Ketelblok SB725

Logano plus SB725

Ersatzteilliste
Spare parts list

Liste des pièces de rechange
Lista parti di ricambio

Onderdelenlijst



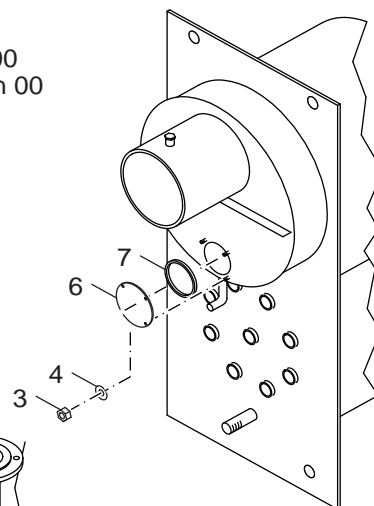
Hinweis:
Bei Defekt der Dichtung D72x50x8mm bitte
Austausch-Abgassammler Pos. 9 bestellen

Notes for the user:
The faulty sealing D72x50x8mm, please order
exchange-waste gas collector position No. 9

SK625/725

< 05/99

Serienstand 00
Series version 00



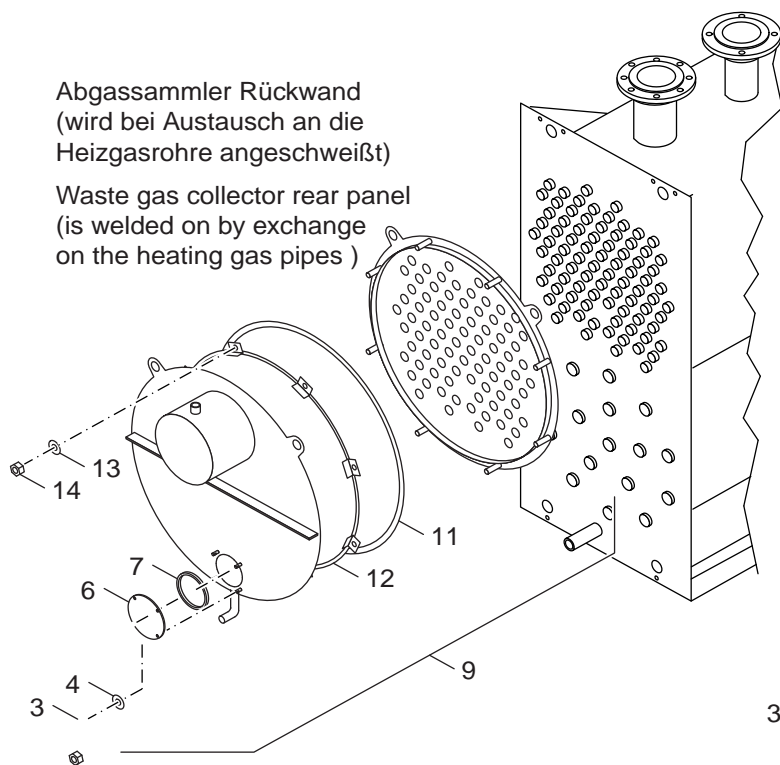
SK625/725

> 05/99

Serienstand 01
Series version 01

Abgassammler Rückwand
(wird bei Austausch an die
Heizgasrohre angeschweißt)

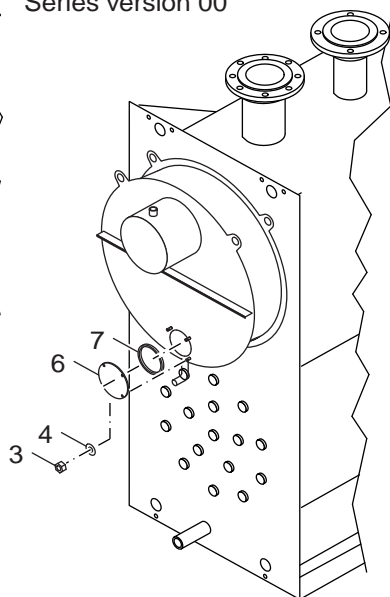
Waste gas collector rear panel
(is welded on by exchange
on the heating gas pipes)



SE625/725

< 05/99

Serienstand 00
Series version 00



SE625/725

> 05/99

Serienstand 01
Series version 01

8738890168.aa.RS-Abgassammler SB725

2

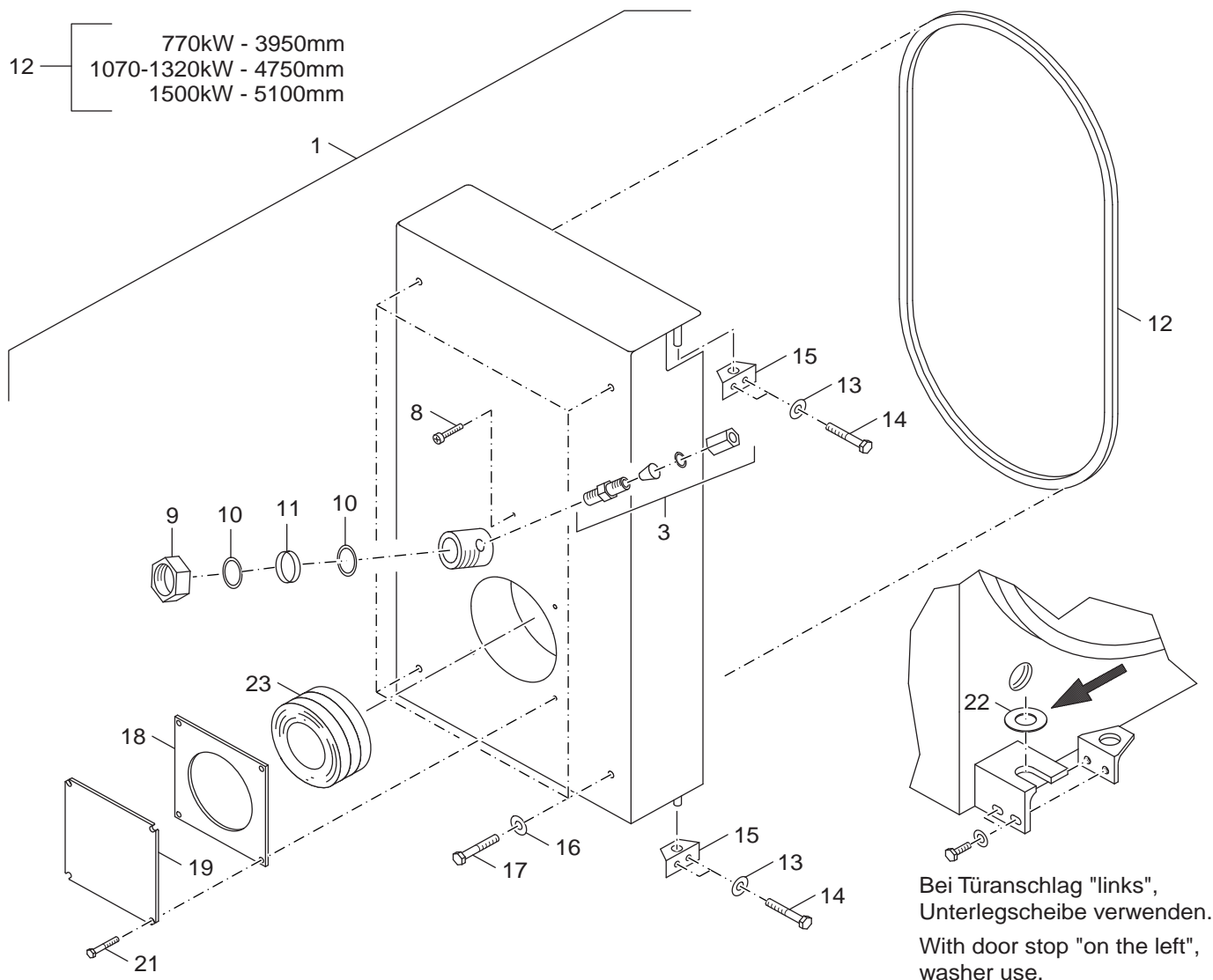
Abgassammler SB725
exhaust collector SB725
Coupe-tirage anti-refouleur SB725
Collettore combusti SB725
Rookgascollector SB725

Logano plus SB725

Ersatzteilliste
Spare parts list

Liste des pièces de rechange
Lista parti di ricambio

Onderdelenlijst



Typ	Leistung in kW		Typ	Leistung in kW	Typ	Leistung in kW
SE/SK625	230	ersetzt to replace	S625	210		
SE/SK625	310		S625	270		
SE/SK625	410		S625	370		
SE/SK625	530		S625	480		
SE/SK625	690		S625	600		
SE/SK725	870		S725	750	SB725	770
SE/SK725	1070		S725	920	SB725	950
SE/SK725	1320		S725	1150	SB725	1200
SE/SK725	1600		S725	1350	SB725	1500

8738890169.aa.RS-Brennertür SB725

3

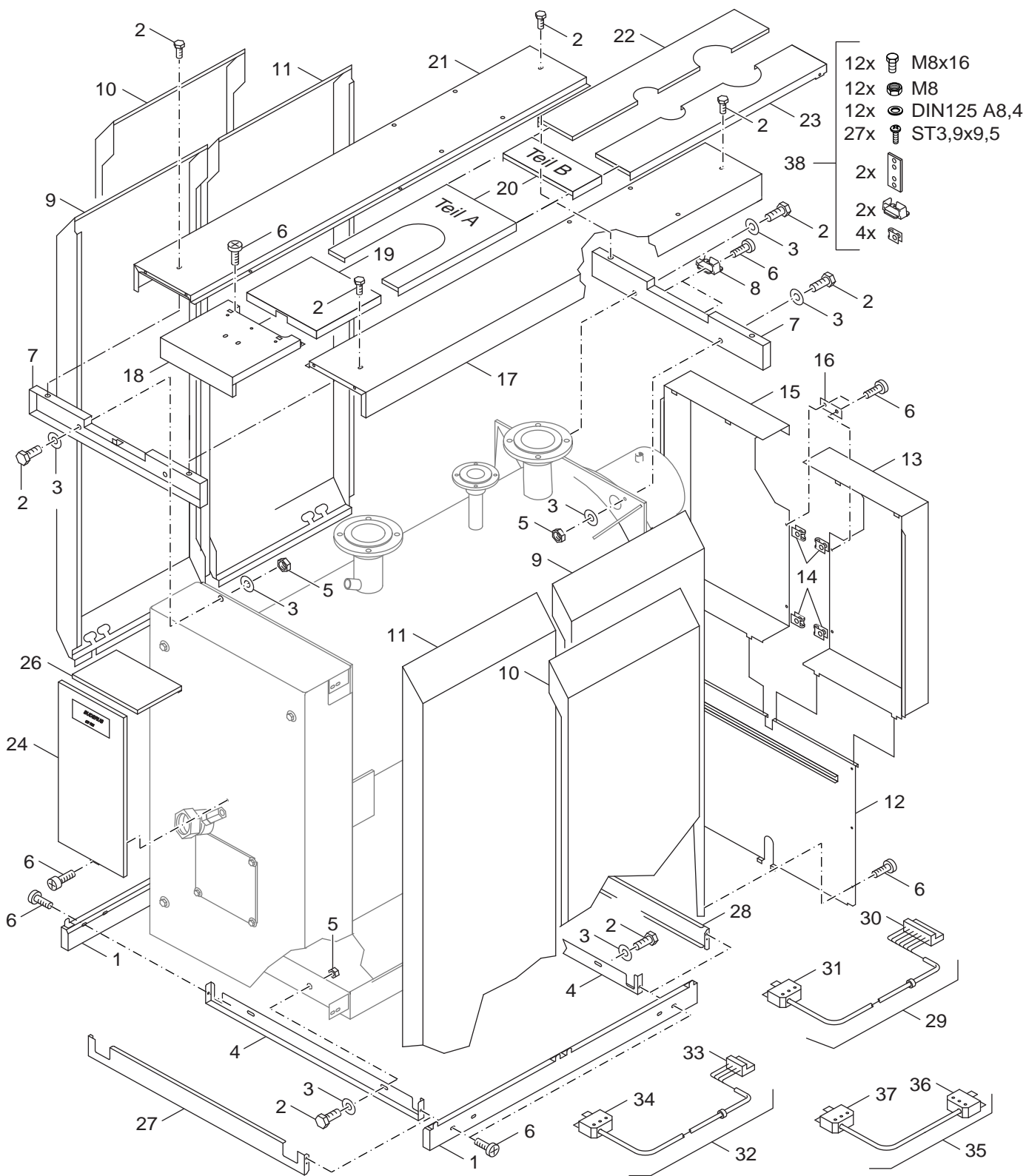
Brennertür SB725
Burner door SB725
Porte de brûleur SB725
Porta del bruciatore SB725
Branderdeur SB725

Logano plus SB725

Ersatzteilliste
Spare parts list

Liste des pièces de rechange
Lista parti di ricambio

Onderdelenlijst



8738890170.aa.RS-Verkleidung SB725

4

Verkleidung SB725
Casing SB725
Carénage SB725
Rivestimento SB725
Bekleding SB725

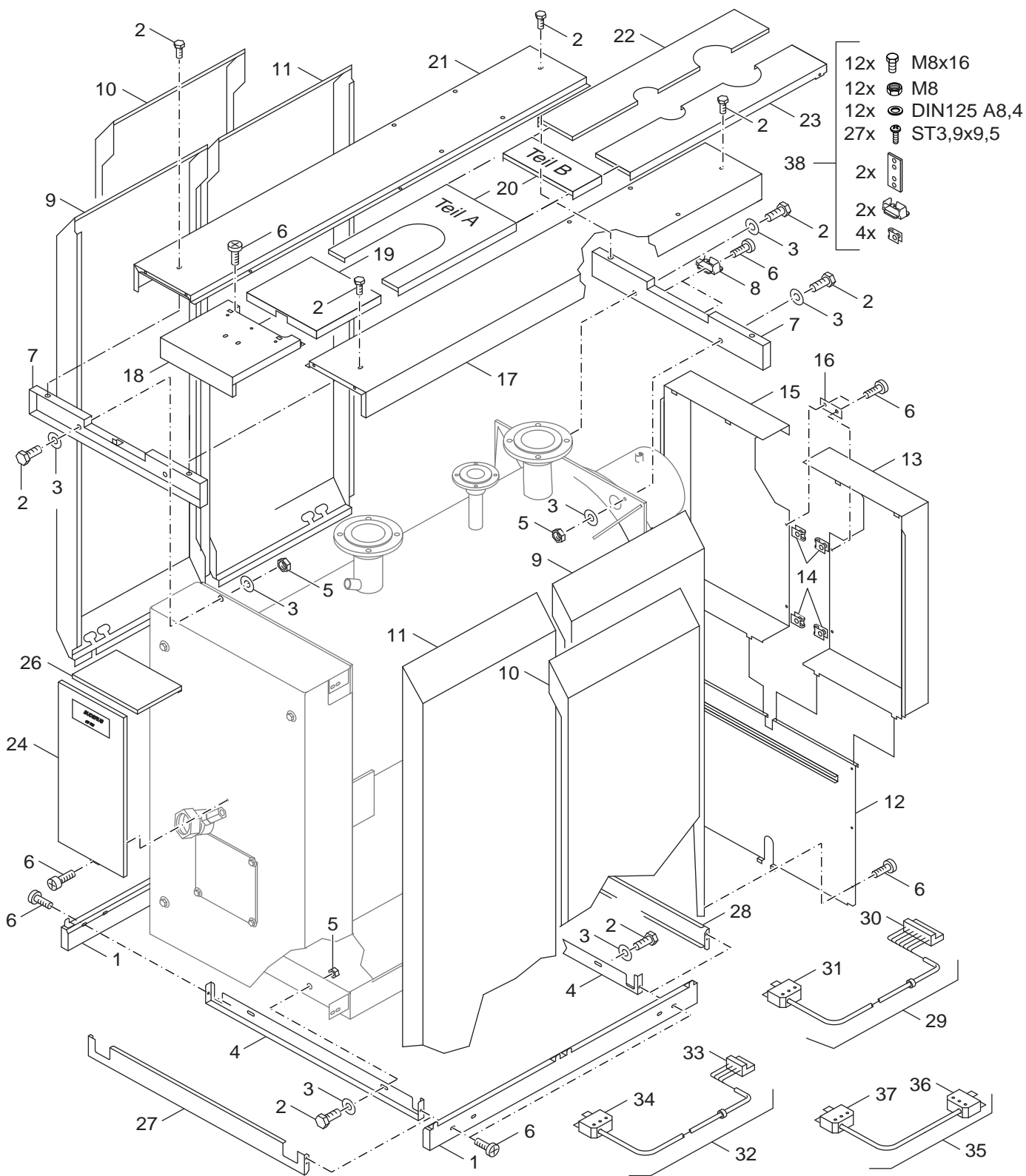
Logano plus SB725

Pos	Bezeichnung description dénomination descrizioni benaming	Bestell-Nr. Ordering no. Numero de commande n° d'ordine Bestelnummer	SB725																		Bemerkungen Remarks Remarques Osservazioni Opmerkingen
1	Sockel längs lackiert S725-870	5785460	■																		
1	Sockel längs lackiert S725-1070/1320	5785462	■																		
1	Sockel längs lackiert S725-1600	5785464	■																		
2	6kt-Schraube ISO4017 M8x16 8.8	5090124	■																		
3	Unterlegscheibe DIN125 A8,4 A3K (10x)	8 718 571 269 0	■																		
4	Traverse unten vo/hi S625/S725 690-870kW	5158440	■																		
4	Traverse unten vo/hi S725 V2 1070-1320kW	63007727	■																		
4	Traverse unten vo/hi S725 V2 1600kW	63007728	■																		
5	6kt-Mutter ISO4032 M8 8 A3K	82585180	■																		
6	Flachkopfschraube ST3,9x9,5 A3T (10x)	7 747 026 999	■																		
7	Traverse oben S625-690/S725-870	5158448	■																		
7	Traverse oben S725-1070/1320	5785454	■																		
7	Traverse oben S725-1600	5785456	■																		
8	Kabelhalter	7060754	■																		
9	Seitenwand links S625-690 S725-870	5158608	■																		
9	Seitenwand links S725-1070/1320	5785570	■																		
9	Seitenwand links S725-1600	5785574	■																		
10	Seitenwand mitte S725-870 lackiert	5785400	■																		
10	Seitenwand mitte S725-1070/1320 lackiert	5785402	■																		
10	Seitenwand mitte S725-1600 lackiert	5785404	■																		
11	Seitenwand rechts S625-690 S725-870	5158610	■																		
11	Seitenwand rechts S725-1070/1320	5785572	■																		
11	Seitenwand rechts S725-1600	5785576	■																		
12	Rückwand unten S625-690 S725-870	5158378	■																		
12	Rückwand unten S725-1070/1320	5785406	■																		
12	Rückwand unten S725-1600	5785408	■																		
13	Rückwand oben rechts S625-690 S725-870	5158390	■																		
13	Rückwand oben rechts S725-1070/1320	5785410	■																		
13	Rückwand oben rechts S725-1600	5785414	■																		
14	Schnappmutter 3,9-A3K-SNU5743	5834364	■																		
15	Rückwand oben links S625-690 S725-870	5158388	■																		
15	Rückwand oben links S725-1070/1320	5785412	■																		
15	Rückwand oben links S725-1600	5785416	■																		
16	Verbindungsflasche 80x30x0,75	63001624	■																		
17	Abdeckblech rechts S725 870kW	5158542	■																		
17	Abdeckblech rechts S725-1070-1320kW	5158544	■																		
17	Abdeckblech rechts S725-1600kW	5785490	■																		
18	Haube vorne S625-690 S725-870-1600	5158394	■																		
19	Haube mitte S725 870-1600kW	8 718 577 727 0	■																		
20	Haube hinten Teil A S725-870	5785530	■																		
20	Haube hinten Teil A S725-1070/1370	5785532	■																		
20	Haube hinten Teil A S725-1600	5785534	■																		
20	Haube hinten Teil B S625/S725	8 718 577 725 0	■																		
21	Abdeckblech links S725 870kW	5158532	■																		
21	Abdeckblech links S725 1070-1320kW	5158534	■																		
21	Abdeckblech links S725 1600kW	5785488	■																		
22	Haube hinten links S625-690/S725-870 geteilt	5158564	■																		
22	Haube hinten links S725-1070/1320 geteilt	5785542	■																		
22	Haube hinten links S725-1600 geteilt	5785544	■																		
23	Haube hinten rechts S625-690/S725-870 geteilt	5158566	■																		
23	Haube hinten rechts S725-1070/1320 geteilt	5785548	■																		
23	Haube hinten rechts S725-1600 geteilt	5785550	■																		
Logano plus SB725																	Verkleidung SB725 Casing SB725 Carénage SB725 Rivestimento SB725 Bekleding SB725				4

Ersatzteilliste
Spare parts list

Liste des pièces de rechange
Lista parti di ricambio

Onderdelenlijst



8738890170.aa.RS-Verkleidung SB725

4

Verkleidung SB725
Casing SB725
Carénage SB725
Rivestimento SB725
Bekleding SB725

Logano plus SB725

Ersatzteilliste
Spare parts list

Liste des pièces de rechange
Lista parti di ricambio


Onderdelenlijst


Hinweis!
Bei Bedarf von Pos. 15 für Verkleidungen
geliefert bis 30.04.1998 müssen Pos. 13+14
mitbestellt werden.

Notes for the user!
The position 13+14 must be ordered with,
when required by position 15 for casing
supplied till 30.04.1998

15

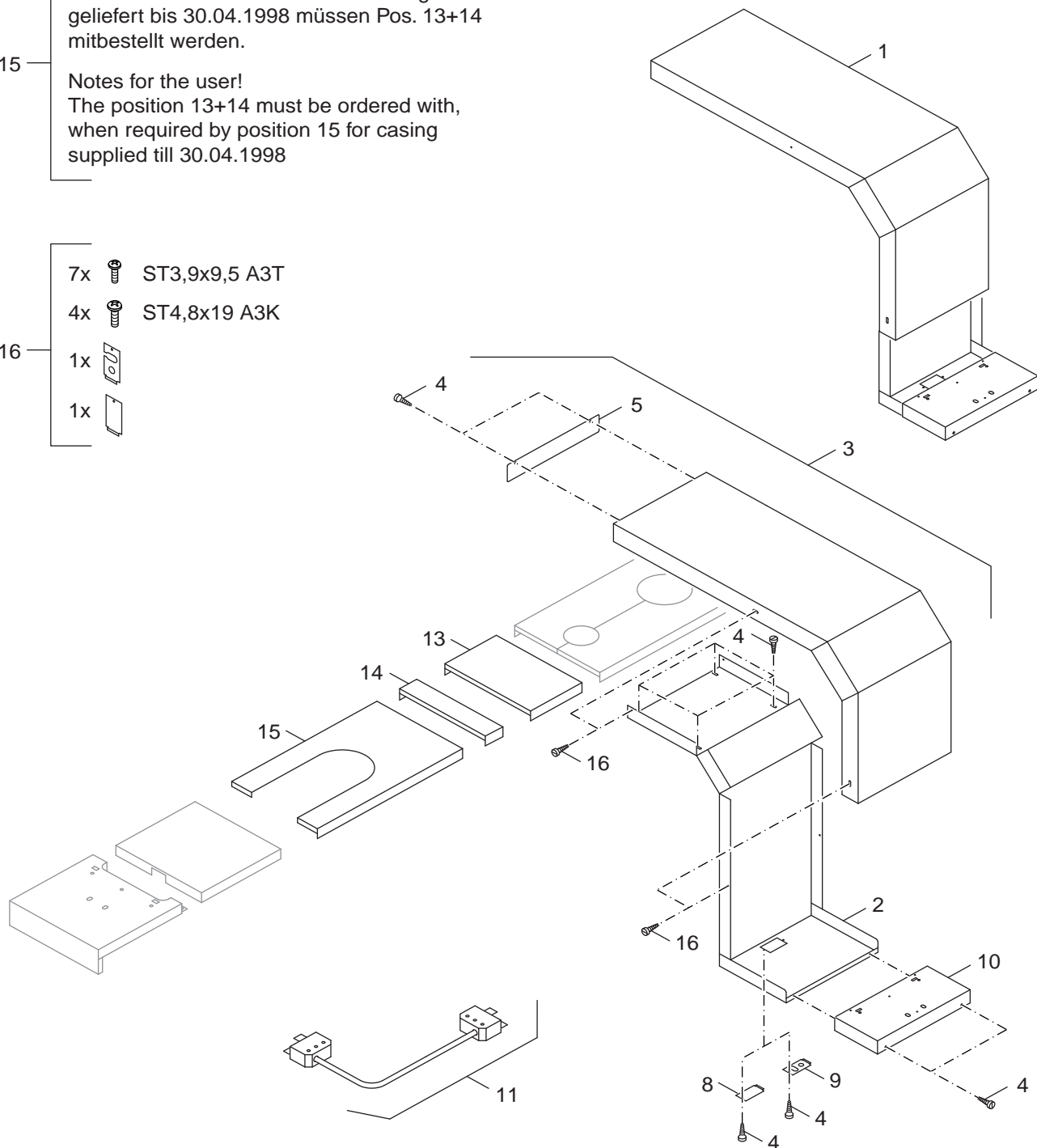
16

7x  ST3,9x9,5 A3T

4x  ST4,8x19 A3K

1x 

1x 

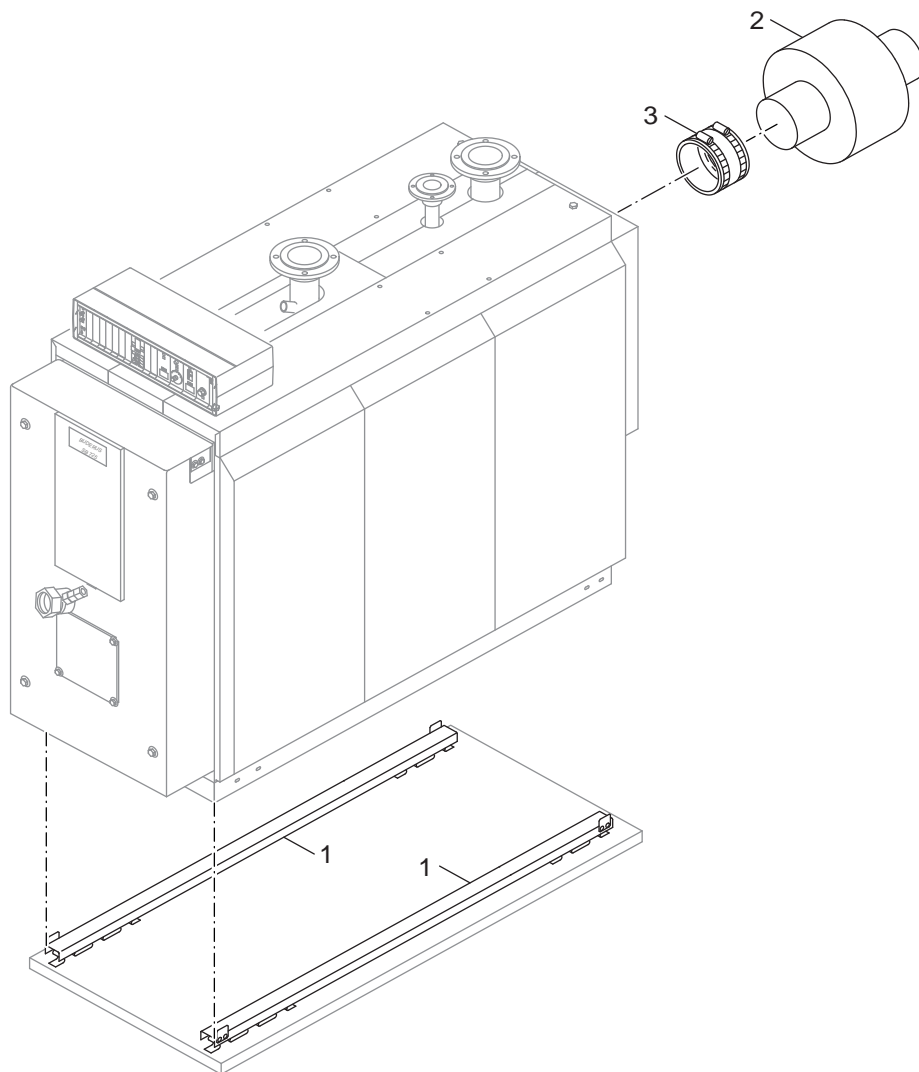


8738890172.aa.RS-Träger für Regelgerät HS4311/4312/4212

Logano plus SB725

6

Verkleidung Träger Regelgerät SB725
casing fixing bracket control unit SB725
Carénage Plaque de jonction SB725
Rivestimento Supporto UnitÃ di comando
Bekleding Draaier Sturing SB725



8738890173.aa.RS-Schalldämmung SB725

7

Schalldämmung SB725
Sound absorption SB725
isolation acoustique SB725
isolamento acustico SB725
Geluidsisolatie SB725

Logano plus SB725

Übersetzungsliste List of translations		Liste des traductions Traduzione delle descrizioni		Vertalinglijst
Pos	Description	Denomination	Descrizione	Benaming
1	Element of construction	Groupe de construction	Gruppo di costruzione	Montagegroep
2	Packing cords 20x25x4050mm	JOINT PORTE 20x25x4050mm	Cordone di tenuta 20x25x4050mm	Afdichtkoord 20x25x4050mm
3	Sensor well R 3/4"x150mm long	DOIGT DE GANT R3/4x150mm	Pozzetto ad immersione R 3/4"x150mm	Dompelhuls R 3/4"x150mm
4	Turbulator 1650/2120mm long SE725	Turbulateur longueur 1650/2120 mm SE725	Turbolatore 1650/2120 mm SE725	Turbulator 1650/2120 mm SE725
5	Thermal insulation Part 2 S725 1070-1320	Isolation 2 S725 1070-1320KW	Isolamento 2 S725 1070-1320KW	Isolatie 2 S725 1070-1320KW
6	Retaining spring (10Pc)	RESSORTS DE RETENUE D 0.8 (10x)	Molla di tenuta (10x)	Borgveer (10x)
7	Thermal insulation Part 1 S725 870KW	Isolation 1 S725 870KW	Isolamento 1 S725 870KW	Isolatie 1 S725 870KW
8	Thermal insulation Part 5 S725 870KW	Isolation 5 S725 870KW	Isolamento 5 S725 870KW	Isolatie 5 S725 870KW
9	Thermal insulation Part 3 S725 870KW	Isolation 3 S725 870KW	Isolamento 3 S725 870KW	Isolatie 3 S725 870KW
10	Thermal insulation Part 4 S625 870KW	Isolation 4 S625 870KW	Isolamento 4 S625 870KW	Isolatie 4 S625 870KW
	Composit-pipe SE725-870KW	Composit-Tube S/SE725 870kW	Composit-Tubo S/SE725 870kW	Composit-Pijp S/SE725 870kW
	Composit-pipe SE725-1070/1320KW	Composit-Tube S/SE725 1070-1320kW	Composit-Tubo S/SE725 1070-1320kW	Composit-Pijp S/SE725 1070-1320kW
	Composit-pipe SE725-1600KW	Composit-Tube S/SE725 1600kW	Composit-Tubo S/SE725 1600kW	Composit-Pijp S/SE725 1600kW
	Rep-set angle sheet S625-690/S725-870	Reparation-Set Equerre Tôle 690/870	Riparazione-Set Angolo Lamierino 690/870	Repair-Set Hoeksteun Blik 690/870
	Rep-set angle sheet S725-1070/1320	Reparation-Set Equerre Tôle 1070/1320	Riparazione-Set Angolo Lamierino	Repair-Set Hoeksteun Blik S725-1070/1320
	Rep-set angle sheet S725-1600	Reparation-Set Equerre Tôle S725-1600	Riparazione-Set Angolo Lamierino 1600	Repair-Set Hoeksteun Blik S725-1600
2	Element of construction	Groupe de construction	Gruppo di costruzione	Montagegroep
3	Hex nut ISO4032 M8 8 A3K	Ecrou 6 pans ISO4032 M8 8 A3K	Dado esagonale ISO4032 M8 8 A3K	Zeskantmoer ISO4032 M8 8 A3K
4	Washer DIN125 A3K (10x)	Rondelle plate DIN125 A3K (10x)	Rondella DIN125 A3K (10x)	Onderlegging DIN125 A3K (10x)
6	Clean-out cover D178mm	Couvercle de trappe de ramonage D178mm	Coperchio di pulizia D178mm	Reinigingsdeksel D178mm
7	Gasket D148x132x8mm GP	Joint D148x132x8mm GP	Guarnizione D148x132x8mm GP	Pakking D148x132x8mm GP
9	Flue gas header SE725 A 1070kW	Buse de fumée compl. SE725 A 1070kW	Collettore combusti SE725 A 1070kW	Rookgascollector SE725 A 1070kW
12	Flue gas header SE625 A / SE725 A	Buse de fumée avant SE625 A / SE725 A	Collettore combusti SE625 A / SE725 A	Rookgascollector SE625 A / SE725 A
13	Washer DIN125 10,5x2 (10x)	Rondelle plate DIN125 10,5x2 (10x)	Rondella DIN125 10,5x2 (10x)	Onderlegging DIN125 10,5x2 (10x)
14	Hex nut ISO4032 M10 8 A3K	Ecrou 6 pans ISO4032 M10 8 A3K	Dado testa esagonale ISO4032 M10 8 A3K	6kt-moer ISO4032 M10 8 A3K
3	Element of construction	Groupe de construction	Gruppo di costruzione	Montagegroep
1	Burner door S625/S725 690-870KW	Porte de brûleur S625/S725 690-870KW	Porta del bruciatore S625/S725 690-870KW	Branderdeur S625/S725 690-870KW
3	Male screw connection GE 10-lr Ermeto	RACCORD ERMETO G10 LR, Ermeto	RACCORD ERMETO G10-LR, Ermeto	Koppeling met binnendraad G10-LR, Ermeto
8	Self-tapping screw DIN7516 A M5x10 A3K	ECROU DIN7516 A M5X10 A3K	Testa esagonale DIN7516 A M5x10 A3K	Self-tapping screw DIN7516 A M5x10 A3K
9	Union nut G 1 1/2"x19 MS	ECROU DE RACCORD G1 1/2" X 19Ms	Dado G 1 1/2"x19 Ms	Wartelmoer G 1 1/2"x19 Ms
10	Sealing ring 39x45x2mm	JOINT VERRE VISEE CHAUD SK615 39x45x2mm	Guarnizione 39x45x2mm	Afdichtring 39x45x2mm
11	Glass pane 44 S=4,5-5,5 repl pack	VERRE VISEE FLAMME CHAUD D44x4,5-5,5mm	Vetrino 44 S=4,5-5,5 (1x)	kijkglas 44 S=4,5-5,5 (1x)
12	Packing cords D30x4050mm	Cordon d'étanchéité D30x4050mm	Cordone di tenuta D30x4050mm	Afdichtkoord D30x4050mm
13	Washer DIN125 A17 A3K	RONDELLE DIN125 A17 A3K	Disco DIN125 A17 A3K	Ring DIN125 A17 A3K
14	Screw DIN6921 M10x25 (10x)	Vis DIN6921 M10x25 (10x)	Vite DIN6921 M10x25 (10x)	Schroef DIN6921 M10x25 (10x)
15	Hinge part left/rechts/top/bottom	Charnière SE/SK 625-725	Cerniera SE/SK 625-725	Scharnier SE/SK 625-725
16	Washer DIN7349 17 A3K (10x)	Rondelle plate DIN7349 17 A3K (10x)	Rondella DIN7349 17 A3K (10x)	Onderlegging DIN7349 17 A3K (10x)
17	Hex bolt ISO4014 M16x380mm 8.8	Vis 6 pans ISO4014-M16x380-8.8	Vite testa esagonale ISO4014 M16x380mm 8	Schroef ISO4014 M16x380mm 8.8
18	Gasket burner plate S725 size 1070-1600	Joint plaque brûleur S725 1070-1600kW	Guarnizione Piastra bruciatore 1070-1600	Pakking Branderplaat S725 1070-1600kW
19	Burner plate (dummy) 10x338x338mm	PLAQUE BRULEUR (PLEINE) 10x338x338mm	Piastra bruciatore 10x338x338mm	blind branderplaat 10x338x338mm
21	Screw Hexagon-head ISO4017 M12x45 (10x)	Vis à tête hexagonale M12x45 (10x)	Vite ISO4017 M12x45 (10x)	Schroef ISO4017 M12x45 (10x)
22	Washer DIN125-A13-A3K	Rondelle DIN125-A13-A3K	Disco DIN125-A13-A3K	Ring DIN125-A13-A3K
23	Insulating ring burner door S625/S725	Bague d'isolation Porte de brûleur	Isolamento anulare Porta del bruciatore	Isolatie ring Branderdeur S625/S725
	Paint spray RAL5015 150ml blue	PEINTURE BOMBE RAL 5015 150ml bleu	Bomboletta Spray RAL 5015 150ml azzuro	Lack blau RAL5015 Sprühdose 150ml
	Repair substance Carbofil 300ml	Masse de réparation Carbofil 130ml	Reparaturmasse Carbofil 300 ml	Reparaturmasse Carbofil 300 ml
	Repair substance Calde Stix14 G3	Masse de réparation Calde Stix14 G3	Reparaturmasse Calde Stix14 G3	Reparaturmasse Calde Stix14 G3
4	Element of construction	Groupe de construction	Gruppo di costruzione	Montagegroep
1	Cover bottom right/left S725 870KW	SOCLE BAS S725 870KW	Mascherina/Pannello sotto S725 870KW	Afdekplaat Onder S725 870KW
2	Hex bolt ISO4017 M8x16 8.8	Ecrou 6 pans ISO4017 M8x16 8.8	Vite ISO4017 M8x16 8.8	Schroef ISO4017 M8x16 8.8
3	Washer DIN125 A3K (10x)	Rondelle plate DIN125 A3K (10x)	Rondella DIN125 A3K (10x)	Onderlegging DIN125 A3K (10x)
4	Tie-bar bottom front/rear S625/S725	Traverse inférieur avant et arrière	Traversa sotto S625/S725 690-870KW	Vangschaaal Onder S625/S725 690-870KW
5	Hex nut ISO4032 M8 8 A3K	Ecrou 6 pans ISO4032 M8 8 A3K	Dado esagonale ISO4032 M8 8 A3K	Zeskantmoer ISO4032 M8 8 A3K
6	Pan-head screw ST3,9x9,5 A3T (10x)	Vis à tête plate ST3,9 (10x)	Vite a testa piana ST3,9x9,5 (10x)	Schroef met vlakke kop ST3,9x9,5 (10x)
7	Tie-bar top front/rear S625/S725	Traverse supérieur avant et arrière	Traversa sopra S625/S725 690-870KW	Vangschaaal Boven S625/S725 690-870KW
8	Cable clip	ATTACHE RAPIDE	Angolare	Houder
9	Side panel left S625/S725 690-870KW	Paroi latérale droite gauche S625/S725	Parete laterale destra sinistra S625/S725	Zijwand Rechts Links S625/S725 690-870KW
10	Side panel middle S725 870KW	Panneau lat.intérméd. S725 870KW	Parete laterale intermedio S725 870KW	Zijwand midden S725 870KW

Übersetzungsliste List of translations		Liste des traductions Traduzione delle descrizioni		Vertalinglijst
Pos	Description	Denomination	Descrizione	Benaming
11	Side panel right S625/S725 690-870kW	Panneau lat. avant droit/arrière gauche	Parete laterale destra sinistra S625/S725	Zijwand Rechts Links S625/S725 690-870kW
12	Rear panel bottom S625/S725 690-870KW	Panneau arrière inférieur S625/S725	Parete posteriore sotto S625/S725	Achterwand Onder S625/S725 690-870KW
13	Rear panel top right S625/S725 690-870KW	Panneau arrière supérieur droit S625	Parete posteriore sopra destra S625	Achterwand Boven Rechts S625 690-870KW
14	Snap nut 3.9-A3K-SNU5743	ECROU 3,9-A3K-SNU5743	Chiocciola 3,9-A3K-SNU5743	Clip 3,9-A3K-SNU5743
15	Rear panel top left S625/S725 690-870KW	HABIL ARR HAUT GAUCHE S625/960 S725/870	Parete posteriore sopra sinistra	Achterwand Boven Links S625/S725 690-870
16	Connection tongue 80x30x0,75mm	Barreau de jonction 80x30x0,75mm	Linguetta 80x30x0,75mm	Klembeugel 80x30x0,75mm
17	Facing panel right S725 870kW	Tôle de protection droit S725 870kW	Lamiera di protezione destra S725 870kW	Afdekplaat Rechts S725 870kW
18	Hood front S625/S725 690-1600KW	Dessus avant S625/S725 690-1600KW	Coperchio anteriore S625/S725 690-1600KW	Afdekkap Voor S625/S725 690-1600KW
19	Hood middle S725 870-1600kW	Capot milieu S725 870-1600kW	Coperchio intermedio S725 870-1600kW	Afdekkap midden S725 870-1600kW
20	Hood rear part A S725 870kW	Dessus arrière A S725 870kW	Coperchio posteriore A S725 870kW	Afdekkap Achter A S725 870kW
21	Facing panel left S725 870kW	Tôle de protection gauche S725 870kW	Lamiera di protezione sinistra S725	Afdekplaat Links S725 870kW
22	Hood rear left S625/S725 690-870kW	Dessus arrière gauche S625/S725	Coperchio posteriore sinistra S625/S725	Afdekkap Achter Links S625/S725
23	Hood rear right S625 690kW	Dessus arrière droit S625 690kW	Coperchio posteriore destra S625 690kW	Afdekkap Achter Rechts S625 690kW
24	Cover burner door S625/S725 690-870KW	Cache pte brûleur avant S625/S725	Pannello Porta del bruciatore S625/S725	Afdekplaat Branderdeur S625/S725 690-870
27	Cover front S725 870KW	Cache avant S725 870KW	Pannello anteriore S725 870KW	Afdekplaat Voor S725 870KW
28	Cover rear S725 870KW	Cache arrière S725 870KW	Pannello posteriore S725 870KW	Afdekplaat achter S725 870KW
29	Burner connecting cable 5000mm long	Câble de raccord. 5000mm	Linea del bruciatore 5000mm	Branderleiding 5000mm
30	Connecting terminal 7-pol green	Borne de connexion 7- pôles vert	Morsetto di collegamento 7-bipol. verde	Afsluitklem 7- polig groen
31	Connector part ST18/7 silver-plated	CONNECT ST18/7 ARGENTE	Connessione a spina ST18/7 argentata	Stekkerdeel ST18/7 verzilverd
32	Burner cable 4300mm + strain relief	Câble de brûleur 4300mm + Sert-cable	Linea del bruciatore 4300mm+Fermo antitr.	Branderleiding 4300mm + Trekontlasting
33	Connecting terminal 4-pol white	Connecteur 2 allures blanche 4 poles V2	Morsetto di collegamento 4-bipolare	Afsluitklem 4-polig wit
34	Connector part 4-polig green	Connecteur 4 poles vert	Spina 4-bipolare verde	Stekker 4-polig groen
35	Burner cable extension 700mm long	Rallonge câble brûleur long.700mm	Linea del bruciatore Prolunga 700mm	Branderleiding Verlenging 700mm
36	Female contact ST18/4 with strain relief	Douille ST 18/4 + Sert-cable	Boccola ST 18/4 + Fermo antitrazione	Huls ST 18/4 + Trekontlasting
37	Connector part 4-polig green	Connecteur 4 poles vert	Spina 4-bipolare verde	Stekker 4-polig groen
38	Installation material S625/725	MATERIEL MONTAGE HABIL S625/725	Materiale per il montaggio S625/725	Montagemateriaal S625/725
	Paint spray RAL5015 150ml blue	PEINTURE BOMBE RAL 5015 150ml bleu	Bomboletta Spray RAL 5015 150ml azzuro	Lack blau RAL5015 Sprühdose 150ml
	Paint spray RAL5013 400ml cobalt blue	Peinture Bombe RAL5013 400ml	Bomboletta Spray RAL 5013 400ml	Lak RAL5013 Sprühdose 400ml
	Cable entry (slotted) (1x)	PASSE CABLE BLEU CIEL RAL 5015 (1x)	Passacavo (blu) (1x)	Kabeldoorvoer met sleuven (blauw) (1x)
6	Element of construction	Groupe de construction	Gruppo di costruzione	Montagegroep
1	Side control unit support for Logamatic	SUPPORT LATERAL POUR REGULATION 4000	Supporto Quadro comandi 4212/4311/HS4312	Houder Schakelkast 4212/4311/HS 4312
2	Bearing arm for control panel	Plaque de jonction de base	Supporto sotto Apparecchio di regolazion	Draaier Onder Regel en best. app.
3	Cover	Couvercle	Coperchio	Afdekking
4	Pan-head screw ST3,9x9,5 A3T (10x)	Vis à tête plate ST3,9 (10x)	Vite a testa piana ST3,9x9,5 (10x)	Schroef met vlakke kop ST3,9x9,5 (10x)
5	Facing plate for bracket control panel	Tôle de protection	Lamierina di protezione	Afdekplaat
8	Facing panel cable entry (blue)	Tôle de protection Passe-câble (bleu)	Lamierina di protezione Passacavo (blu)	Afdekplaat kabeldoorvoer (blauw)
9	Cable entry (slotted) (1x)	PASSE CABLE BLEU CIEL RAL 5015 (1x)	Passacavo (blu) (1x)	Kabeldoorvoer met sleuven (blauw) (1x)
10	Hood for control panel HS 4311/4312	Capot HS 4311/4312	Coperchio HS 4311/4312	Afdekkap HS 4311/4312
11	Burner wire 8M	CABLE BRUL 2 ALLURES 8M	Burner wire 8M	Branderkabel 8M - 2 Brandertrap
13	Hood rear part B S625/S725 size 690-1600	Dessus partie B S625/S725 690-1600KW	Coperchio posteriore S625/S725 690-1600	Afdekkap Achter B S625/S725 690-1600KW
14	Hood rear part C S625/S725 size 690-1600	Dessus partie C S625/S725 690-1600KW	Coperchio posteriore S625/S725 690-1600	Afdekkap Achter C S625/S725 690-1600KW
15	Hood rear part A S625 690kW	Dessus arrière part.A S625-690 compl.	Coperchio posteriore A S625 690kW	Afdekkap Achter A S625 690kW
16	Installation material support for	matériel de montage Plaque de jonction	materiale per il montaggio Supporto sott	Montagemateriaal Draaier Onder Regel
7	Element of construction	Groupe de construction	Gruppo di costruzione	Montagegroep
1	Sound-absorbing boiler plinth	Socle de chaudière S725-870kW,SB735-790	Sottofondo caldaia S725-870kW,SB735-790	Ketelsokkel S725-870kW,SB735-790kW
2	Flue gas silencer of steel, DN 300	PIEGE SON DN300 ACIER	Silenziatore gas combusti, DN 300	Rookgasgeluiddemper, DN 300
3	Flue pipe sealing collars DN300	Manchette d'étanchéité DN300 compl.	Guarnizione a flangia DN300	Afdichtmanchet voor de rookgasafvoerbuis
8	Element of construction	Groupe de construction	Gruppo di costruzione	Montagegroep
1	Boiler safety valve set acc. EN 12828,	Groupe de robinets de sécurité	Valvola di sicurezza DN 125	Ketel Veiligheidsklep DN 125
2	Armature with cap valve 3/4"	Tuyau distributeur 3/4"	Valvola Distributore 3/4"	Armatuur Kortsluitleiding 3/4"
3	Cap valve	SOUPAPE DE SECURITE	Valvola	Ventiel
4	Pressure gauge valve MS 1/2" with	Soupape de manomètre MS 1/2", PN250	Manometro-Valvola Ms 1/2", PN250	Manometer-Ventiel Ms 1/2", PN250
5	Pressure gauge 100mmD1/2" 0-10bar (2	Manomètre d:100mm, 0-10bar 1/2"	Manometro davanti d:100mm, 0-10bar 1/2"	Manometer vooraan d:100mm, 0-10bar 1/2"
6	Kit Plug for safety armatures groupe	Jeu de bouchons pr.groupe de robinets	Tappo Set	Doorvoertule Set
7	Sensor well G 1/2 100mm long	Doigt de gant G 1/2" 100mm de long.	Pozzetto ad immersione G 1/2" 100mm	Dompelhuls G 1/2" 100mm
8	Thermometer D100 G1/2 0 - 120° C 100mm	Thermomètre D100 G1/2 0-120°C long.100mm	Termometro D100 G1/2 0 - 120° C 100mm	Thermometer D100 G1/2 0 - 120° C 100mm
9	Limiter water level SYR 933,20,11	Régleur de débit eau SYR 933,20,11	Regolatore portata SYR 933,20,11	Waterdebietregelaar SYR 933,20,11

Bosch Thermotechnik GmbH
Sophienstraße 30-32
D-35576 Wetzlar
www.buderus.de

Buderus