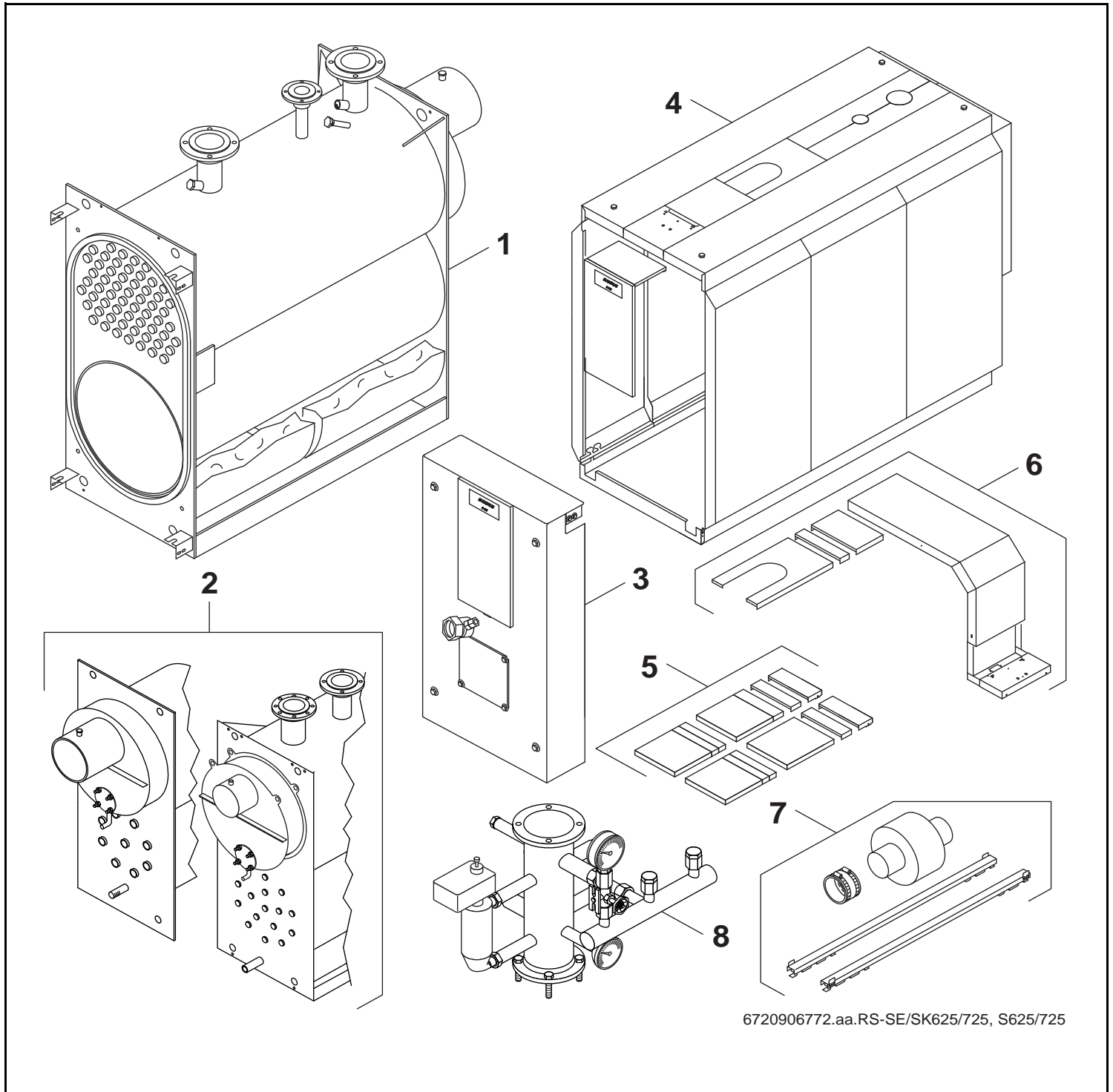


Logano S625/725, SE/SK625/725

Logano plus SE625/725



Buderus

Wichtige Hinweise

- Ersatzteile dürfen nur von einem zugelassenen Installateur eingebaut werden!
- Im Anhang finden Sie:
 - die Übersetzungen aller verwendeten Teilebezeichnungen
 - eine Übersicht der Gerätetypen und Länder, für die diese Ersatzteilliste gilt.

Important notes

- The spare parts may only be installed by an approved installer!
- In the appendix you will find:
 - a list of translations of the names of all parts used
 - a list of the models and countries to which this spare parts list applies.

Indications importantes

- L'installation des pièces de rechange doit être effectuée par un professionnel qualifié!
- Veuillez trouver en annexe:
 - les traductions de toutes les désignations des pièces utilisées
 - une vue globale des types de chaudières et des pays pour lesquels la présente liste des pièces de rechange est valable.

Informações importantes

- Peças de substituição só podem ser montadas por um técnico credenciado!
- Em anexo encontra:
 - as traduções das designações de todas as peças utilizadas.
 - lista dos aparelhos e países para os quais esta lista de peças de substituição é válida.

Avvertenze importanti

- Le parti di ricambio possono essere montate esclusivamente da personale qualificato ed in possesso dei requisiti tecnico-professionali!
- In appendice sono reperibili:
 - traduzione di ogni descrizione relativa alle varie parti di ricambio
 - elenco di sigle e codici, corrispondente ai vari paesi di destinazione.

Indicaciones importantes

- Los repuestos solamente deben ser montados por los servicios técnicos oficiales de la marca!
- En el anexo podrá encontrar:
 - la traducción de todas las denominaciones de piezas empleadas
 - una relación de los tipos de aparato y países en los que se aplica esta lista de repuestos.

Belangrijke aanwijzing

- Onderdelen mogen alleen door een erkend installateur worden vervangen!
- In de bijlage vindt u:
 - de vertalingen van de gebruikte onderdelentekeningen
 - een overzicht van toesteltypen en de landen waarvoor deze onderdelenlijst bedoeld is.

Önemli Bilgiler

- Yedek parçalar sadece yetkili tesisatçılar tarafından monte edilebilir!
- Aşağıdaki bilgileri ekli olarak bulabilirsiniz:
 - Tüm kullanılan parça tanımlarının tercümelemleri
 - Bu yedek parça listesinin geçerli olduğu tüm cihaz çeşitleri ve ülkelerin özeti.

Ersatzteilliste
Spare parts list

Liste des pièces de rechange
Lista parti di ricambio

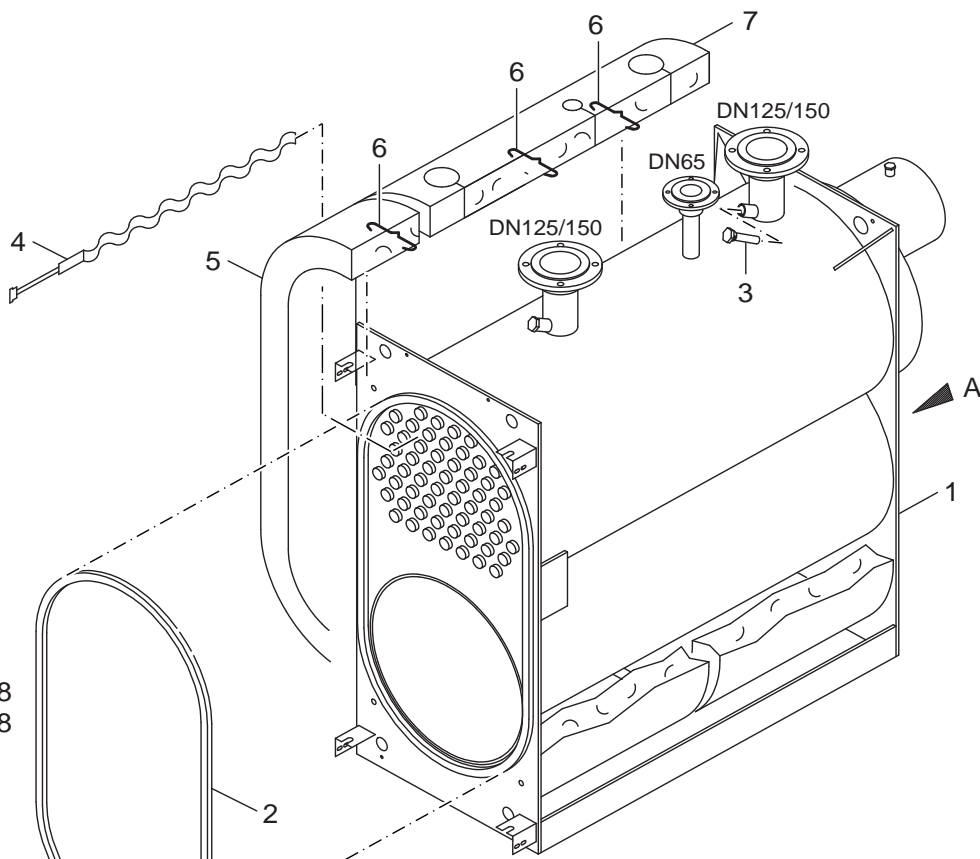
Onderdelenlijst

SE625/SE725

- 230kW - 20x
- 310kW - 27x
- 410kW - 32x
- 530kW - 42x
- 690kW - 52x
- 870kW - 58x
- 1070kW - 64x
- 1320kW - 83x
- 1600kW - 103x

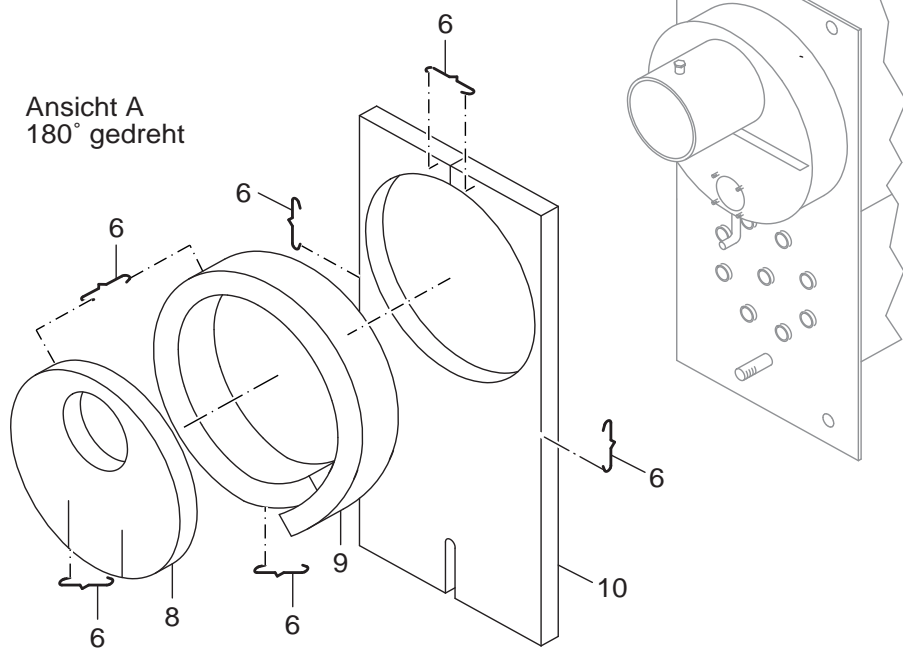
SK625/SK725

- 230kW - 20x
- 310kW - 27x
- 410kW - 34x
- 530kW - 42x
- 690kW - 52x
- 870kW - 67x < 31.01.1998
- 870kW - 58x > 01.02.1998
- 1070kW - 64x
- 1320kW - 83x
- 1600kW - 103x



- 230-310kW - 2950mm
- 410-530kW - 3300mm
- 690-870kW - 3950mm
- 1070-1320kW - 4750mm
- 1600kW - 5100mm

Ansicht A
180° gedreht



99906986.aa.RS-Kesselblock SE/SK625-SE/SK725

1

Kesselblock SE/SK 625/725
Boiler block SE/SK 625/725
Corps de chauffe SE/SK 625/725
Corpo caldaia SE/SK 625/725
Ketelblok SE/SK 625/725

Logano S625/725, SE/SK625/725
Logano plus SE625/725

Pos	Bezeichnung description dénomination descrizioni benaming	Bestell-Nr. Ordering no. Numero de commande n° d'ordine Bestelnummer	S/SE/SK 625/725																		Bemerkungen Remarks Remarques Osservazioni Opmerkingen
1	Kesselblock SK725-870	5785252	■																		
1	Kesselblock SK725-1070	5785255	■																		
1	Kesselblock SK725-1320	5785260	■																		
1	Kesselblock SK725-1600	5785265	■																		
1	Kesselblock SE725-870	5785305	■																		
1	Kesselblock SE725-1070	5785315	■																		
1	Kesselblock SE725-1320	5785325	■																		
1	Kesselblock SE725-1600	5785335	■																		
1	Kesselblock SE625-230	5791605	■																		
1	Kesselblock SE625-310	5791615	■																		
1	Kesselblock SE625-410	5791625	■																		
1	Kesselblock SE625-530	5791635	■																		
1	Kesselblock SE625-690	5791645	■																		
1	Kesselblock SK625-230	5791660	■																		
1	Kesselblock SK625-310	5791665	■																		
1	Kesselblock SK625-410	5791672	■																		
1	Kesselblock SK625-530	5791675	■																		
1	Kesselblock SK625-690	5791680	■																		
2	Dichtschnur 20x25x3120mm lang	7057042	■																		230-310KW
2	Dichtschnur 20x25x3520mm lang	7057044	■																		410-530KW
2	Dichtschnur 20x25x4050mm lang	7057048	■																		690-870KW
2	Dichtschnur 20x25x5100mm	9556026	■																		1070-1600KW
3	Tauchhülse R 3/4"x150mm	5446085	■																		
4	Turbulator 1350/1710 mm lang SE625	5059280	■																		230-310KW
4	Turbulator 1500/1890 mm lang SE625	5059282	■																		530KW
4	Turbulator 1350/1890 mm lang SE625	5059284	■																		410KW
4	Turbulator 1650/1890 mm lang SE625	5059286	■																		690KW
4	Turbulator 1650/2120 mm lang SE725	5059290	■																		870KW
4	Turbulator 1650/2240 mm lang SE725	5059292	■																		1070-1320KW
4	Turbulator 1650/2340 mm lang SE725	5059294	■																		1600KW
4	Turbulator 1000/1710 mm lang SK625	5059300	■																		230-310KW
4	Turbulator 1150/1890 mm lang SK625	5059302	■																		410-690KW
4	Turbulator SK725-870 V1	5059320	■																		870KW <31.01.1998
4	Turbulator 1250/2120 mm lang SK725-870 V2	5059321	■																		870KW >01.02.1998
4	Turbulator 1250/2240mm lang SK725	5059322	■																		1070-1320KW
4	Turbulator 1250/2340 mm lang SK725	5059324	■																		1600KW
5	Wärmeschutz Teil2 S625-230/310	5782922	■																		
5	Wärmeschutz Teil2 S625-410/530	5782932	■																		
5	Wärmeschutz Teil2 S625-690	5782936	■																		
5	Wärmeschutz Teil2 S725-870	5782938	■																		
5	Wärmeschutz Teil2 S725-1070/1320	5782890	■																		
5	Wärmeschutz Teil2 S725-1600	5782984	■																		
6	Haltefeder (10x) mverp	7 747 016 084	■																		
7	Wärmeschutz Teil1 S625-230/310	5782920	■																		
7	Wärmeschutz Teil1 S625 410/530	5782930	■																		
7	Wärmeschutz Teil1 S625-690	5782731	■																		
7	Wärmeschutz Teil1 S725-870	5782879	■																		
7	Wärmeschutz Teil1 S725-1070/1320	5782888	■																		
7	Wärmeschutz Teil1 S725-1600	5782982	■																		
8	Wärmeschutz Teil5 S625-230/310	5782928	■																		
8	Wärmeschutz Teil5 S625-410/530	5782722	■																		
8	Wärmeschutz Teil5 S625-690	5782727	■																		
Logano S625/725, SE/SK625/725																Kesselblock SE/SK 625/725				1	
Logano plus SE625/725																Boiler block SE/SK 625/725					
																Corps de chauffe SE/SK 625/725					
																Corpo caldaia SE/SK 625/725					
																Ketelblok SE/SK 625/725					

Ersatzteilliste
Spare parts list

Liste des pièces de rechange
Lista parti di ricambio

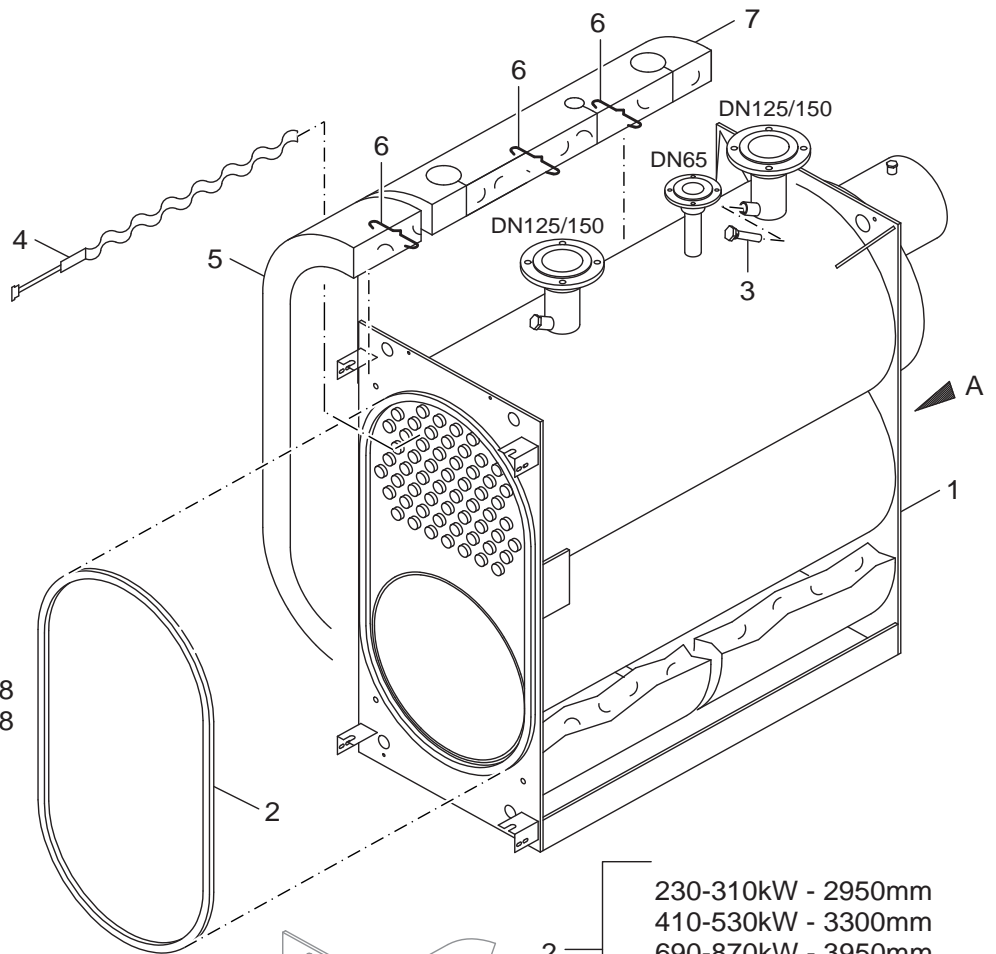
Onderdelenlijst

SE625/SE725

- 230kW - 20x
- 310kW - 27x
- 410kW - 32x
- 530kW - 42x
- 690kW - 52x
- 870kW - 58x
- 1070kW - 64x
- 1320kW - 83x
- 1600kW - 103x

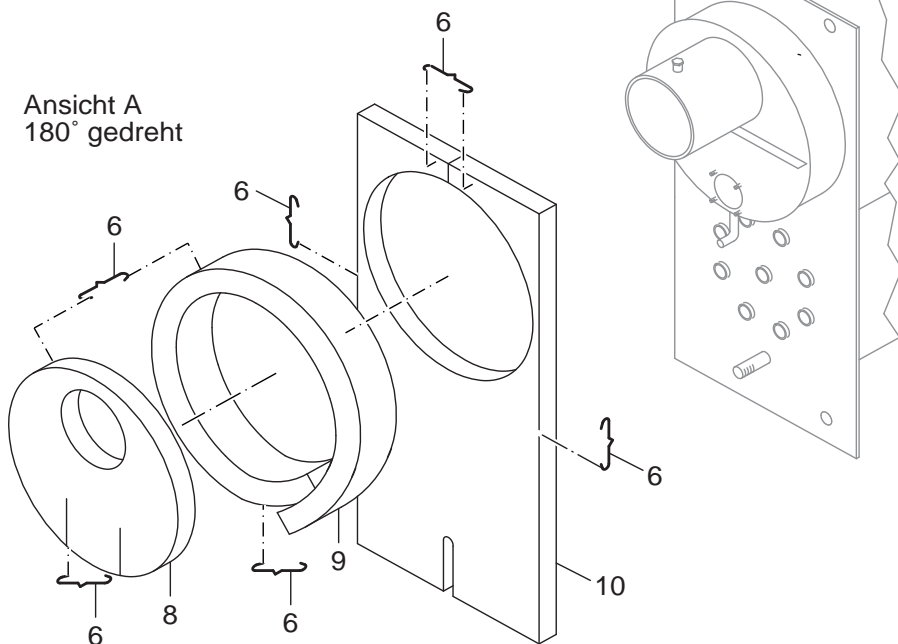
SK625/SK725

- 230kW - 20x
- 310kW - 27x
- 410kW - 34x
- 530kW - 42x
- 690kW - 52x
- 870kW - 67x < 31.01.1998
- 870kW - 58x > 01.02.1998
- 1070kW - 64x
- 1320kW - 83x
- 1600kW - 103x



- 230-310kW - 2950mm
- 410-530kW - 3300mm
- 690-870kW - 3950mm
- 1070-1320kW - 4750mm
- 1600kW - 5100mm

Ansicht A
180° gedreht



99906986.aa.RS-Kesselblock SE/SK625-SE/SK725

1

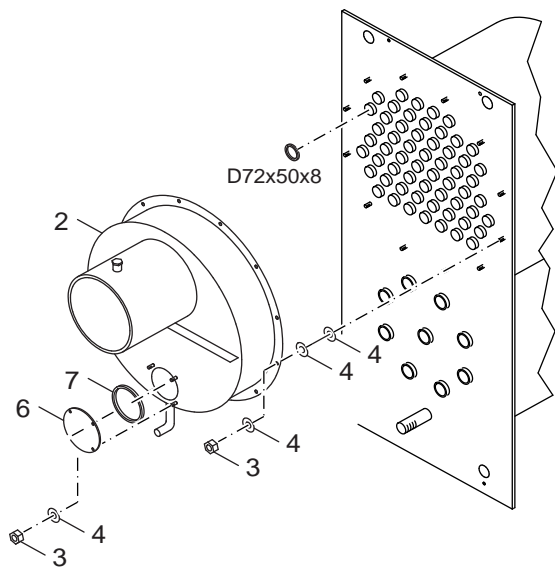
Kesselblock SE/SK 625/725
Boiler block SE/SK 625/725
Corps de chauffe SE/SK 625/725
Corpo caldaia SE/SK 625/725
Ketelblok SE/SK 625/725

Logano S625/725, SE/SK625/725
Logano plus SE625/725

Ersatzteilliste
Spare parts list

Liste des pièces de rechange
Lista parti di ricambio

Onderdelenlijst



Hinweis:

Bei Defekt der Dichtung D72x50x8mm bitte Austausch-Abgassammler Pos. 9 bestellen

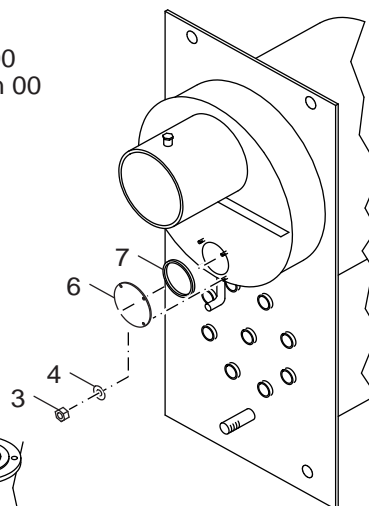
Notes for the user:

The faulty sealing D72x50x8mm, please order exchange-waste gas collector position No. 9

SK625/725

< 05/99

Serienstand 00
Series version 00



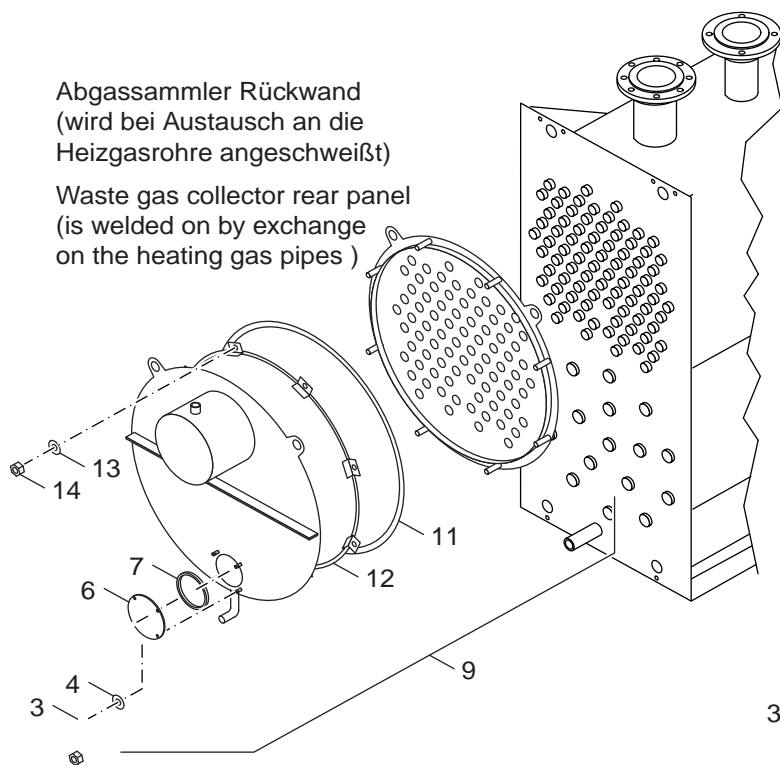
SK625/725

> 05/99

Serienstand 01
Series version 01

Abgassammler Rückwand
(wird bei Austausch an die Heizgasrohre angeschweißt)

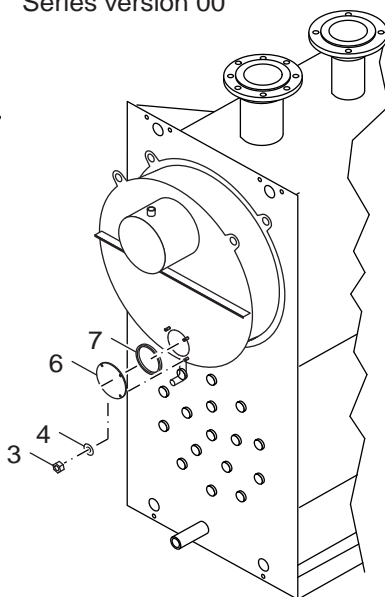
Waste gas collector rear panel
(is welded on by exchange on the heating gas pipes)



SE625/725

< 05/99

Serienstand 00
Series version 00



SE625/725

> 05/99

Serienstand 01
Series version 01

99908163.aa.RS-Abgassammler SE/SK625/725

2

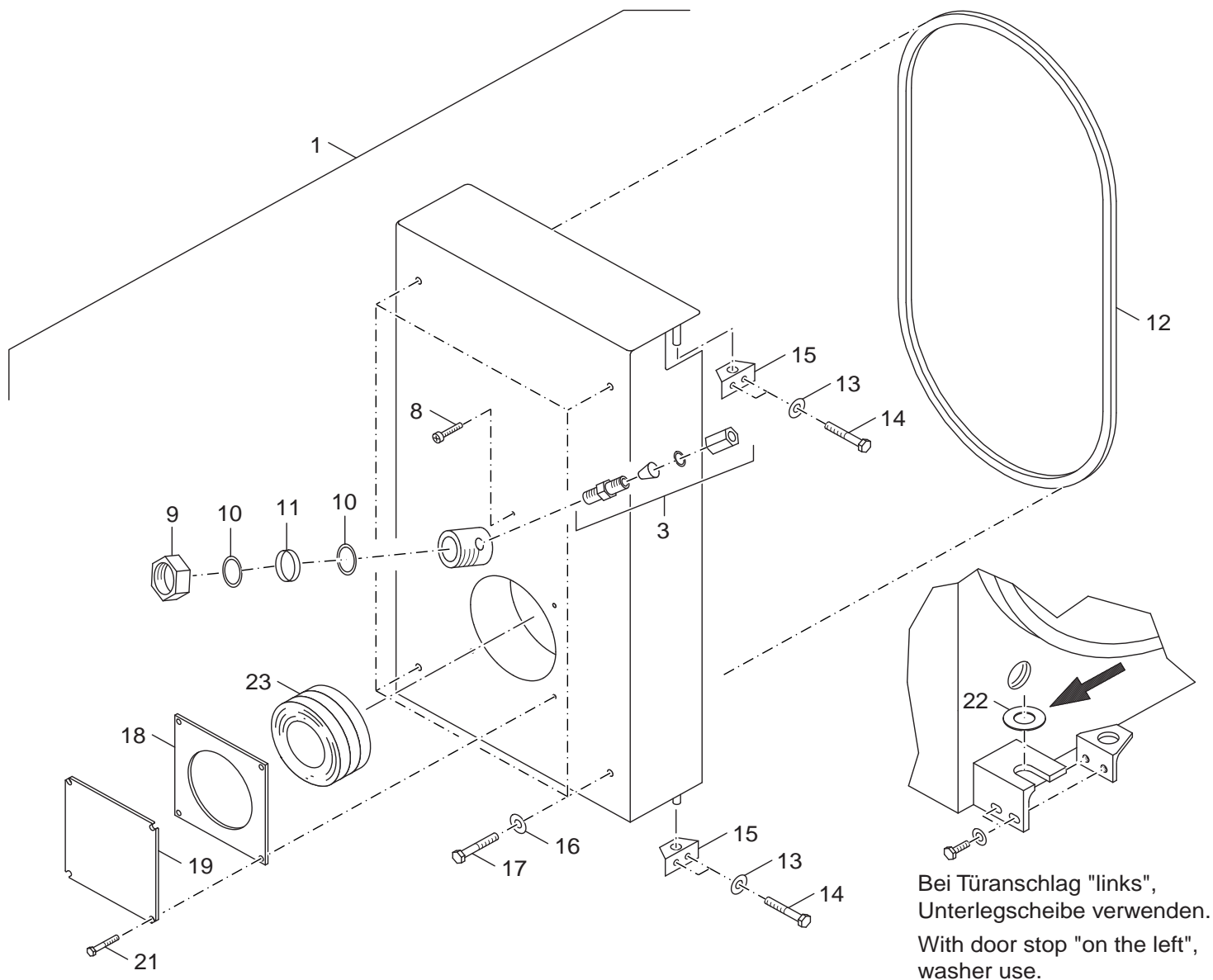
Abgassammler SE/SK 625/725
exhaust collector SE/SK 625/725
Coupe-tirage anti-refouleur SE/SK625/725
Collettore combusti SE/SK 625/725
Rookgascollector SE/SK 625/725

Logano S625/725, SE/SK625/725
Logano plus SE625/725

Ersatzteilliste
Spare parts list

Liste des pièces de rechange
Lista parti di ricambio

Onderdelenlijst



Bei Türanschlag "links",
Unterlegscheibe verwenden.
With door stop "on the left",
washer use.

Typ	Leistung in kW		Typ	Leistung in kW	Typ	Leistung in kW
SE/SK625	230	ersetzt to replace	S625	210		
SE/SK625	310		S625	270		
SE/SK625	410		S625	370		
SE/SK625	530		S625	480		
SE/SK625	690		S625	600		
SE/SK725	870		S725	750	SB725	770
SE/SK725	1070		S725	920	SB725	950
SE/SK725	1320		S725	1150	SB725	1200
SE/SK725	1600		S725	1350	SB725	1500

99909000.aa.RS-Brennertür SE/SK625/725

3

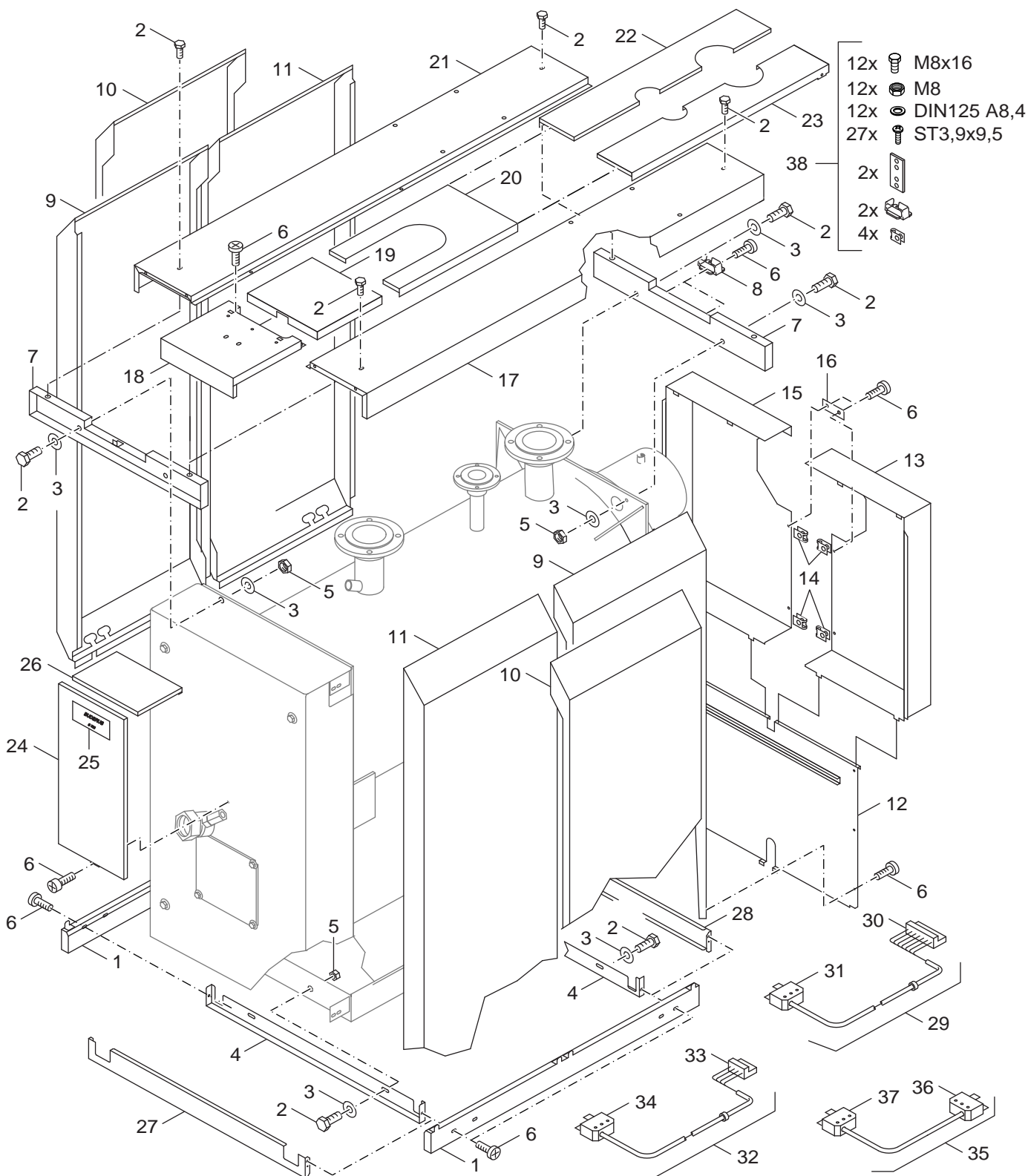
Brennertür SE/SK 625/725
Burner door SE/SK 625/725
Porte de brûleur SE/SK 625/725
Porta del bruciatore SE/SK 625/725
Branderdeur SE/SK 625/725

Logano S625/725, SE/SK625/725
Logano plus SE625/725

Ersatzteilliste
Spare parts list

Liste des pièces de rechange
Lista parti di ricambio

Onderdelenlijst



99907096.aa.RS-Verkleidung SE/SK625/725

4

Verkleidung SE/SK 625/725
Casing SE/SK 625/725
Carénage SE/SK 625/725
Rivestimento SE/SK 625/725
Bekleding SE/SK 625/725

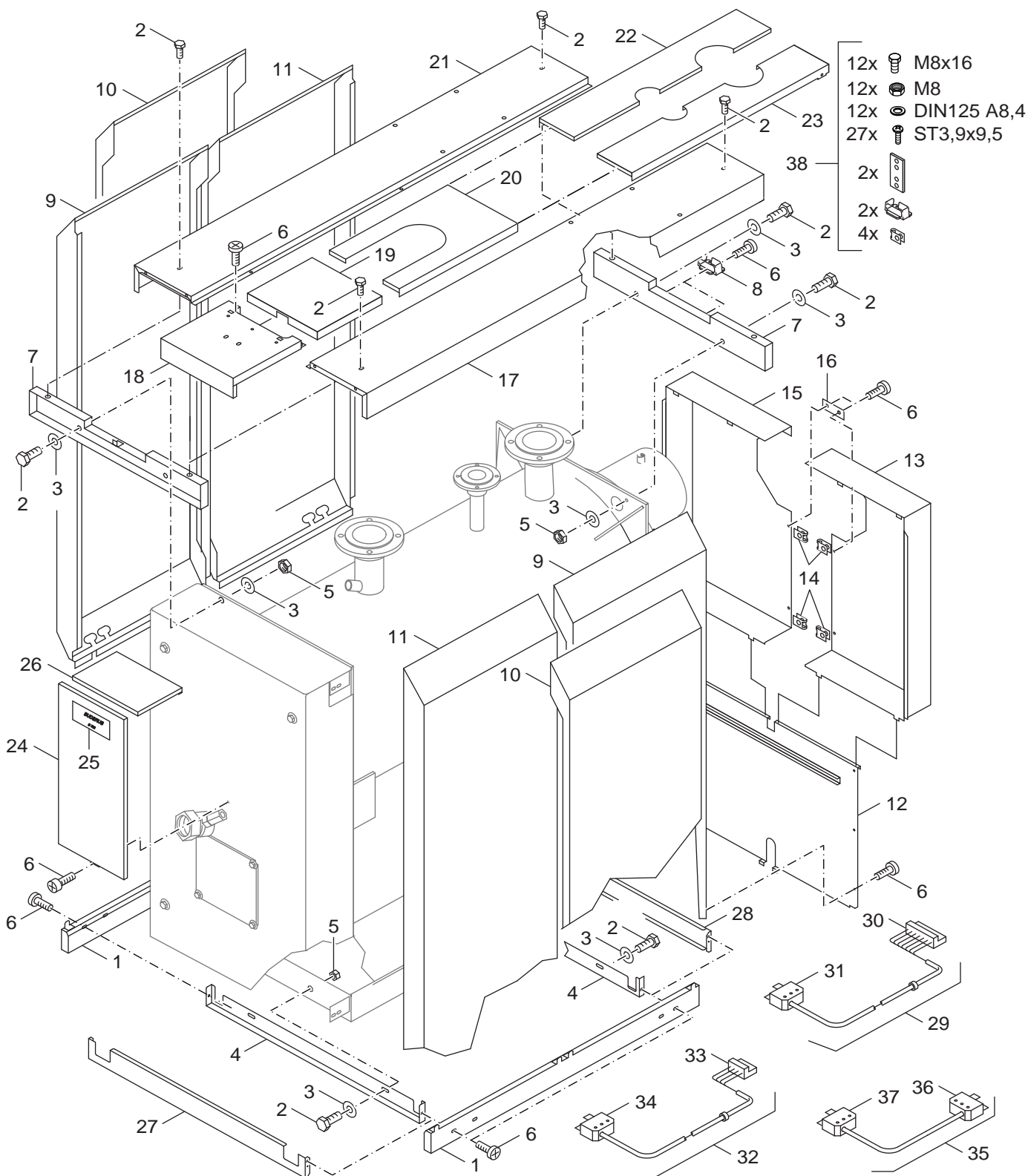
Logano S625/725, SE/SK625/725
Logano plus SE625/725

Pos	Bezeichnung description dénomination descrizioni benaming	Bestell-Nr. Ordering no. Numero de commande n° d'ordine Bestelnummer	S/SE/SK 625-725																		Bemerkungen Remarks Remarques Osservazioni Opmerkingen
1	Sockel längs lackiert S625-230/310	5158460	■																		
1	Sockel längs lackiert S625-410/530/690	5158462	■																		
1	Sockel längs lackiert S725-870	5785460	■																		
1	Sockel längs lackiert S725-1070/1320	5785462	■																		
1	Sockel längs lackiert S725-1600	5785464	■																		
2	6kt-Schraube ISO4017 M8x16 8.8	5090124	■																		
3	Unterlegscheibe DIN125 A8,4 A3K (10x)	8 718 571 269 0	■																		
4	Traverse unten vo/hi S625 230-310kW	5158437	■																		
4	Traverse unten vo/hi S625 410-530kW	5158439	■																		
4	Traverse unten vo/hi S625/S725 690-870KW	5158440	■																		
4	Traverse unten vo/hi S725 V2 1070-1320kW	63007727	■																		
4	Traverse unten vo/hi S725 V2 1600kW	63007728	■																		
5	6kt-Mutter ISO4032 M8 8 A3K	82585180	■																		
6	Flachkopfschraube ST3,9x9,5 A3T (10x)	7 747 026 999	■																		
7	Traverse ob S625-230/310 kpl	5158442	■																		
7	Traverse ob S625-410/530 kpl	5158444	■																		
7	Traverse ob S625-690/S725-870	5158448	■																		
7	Traverse ob S725-1070/1320	5785454	■																		
7	Traverse ob S725-1600	5785456	■																		
8	Kabelhalter	7060754	■																		
9	Seitenwand li S625-230/310	5158600	■																		
9	Seitenwand li S625-410/530	5158604	■																		
9	Seitenwand li S625-690 S725-870	5158608	■																		
9	Seitenwand li S725-1070/1320	5785570	■																		
9	Seitenwand li S725-1600	5785574	■																		
10	Seitenwand mi S625-410/530	5158370	■																		
10	Seitenwand mi S625-690	5158372	■																		
10	Seitenwand mi S725-870	5785400	■																		
10	Seitenwand mi S725-1070/1320	5785402	■																		
10	Seitenwand mi S725-1600	5785404	■																		
11	Seitenwand re S625-230/310	5158602	■																		
11	Seitenwand re S625-410/530	5158606	■																		
11	Seitenwand re S625-690 S725-870	5158610	■																		
11	Seitenwand re S725-1070/1320	5785572	■																		
11	Seitenwand re S725-1600	5785576	■																		
12	Rückwand un S625-230/310	5158374	■																		
12	Rückwand un S625-410/530	5158376	■																		
12	Rückwand un S625-690 S725-870	5158378	■																		
12	Rückwand un S725-1070/1320	5785406	■																		
12	Rückwand un S725-1600	5785408	■																		
13	Rückwand ob re S625-230/310	5158382	■																		
13	Rückwand ob re S625-410/530	5158386	■																		
13	Rückwand ob re S625-690 S725-870	5158390	■																		
13	Rückwand ob re S725-1070/1320	5785410	■																		
13	Rückwand ob re S725-1600	5785414	■																		
14	Schnappmutter 3,9-A3K-SNU5743	5834364	■																		
15	Rückwand ob li S625-230/310	5158380	■																		
15	Rückwand ob li S625-410/530	5158384	■																		
15	Rückwand ob li S625-690 S725-870	5158388	■																		
15	Rückwand ob li S725-1070/1320	5785412	■																		
15	Rückwand ob li S725-1600	5785416	■																		
16	Verbindungsflasche 80x30x0,75	63001624	■																		
Logano S625/725, SE/SK625/725 Logano plus SE625/725																	Verkleidung SE/SK 625/725 Casing SE/SK 625/725 Carénage SE/SK 625/725 Rivestimento SE/SK 625/725 Bekleding SE/SK 625/725			4	

Ersatzteilliste
Spare parts list

Liste des pièces de rechange
Lista parti di ricambio

Onderdelenlijst



99907096.aa.RS-Verkleidung SE/SK625/725

4

Verkleidung SE/SK 625/725
Casing SE/SK 625/725
Carénage SE/SK 625/725
Rivestimento SE/SK 625/725
Bekleding SE/SK 625/725

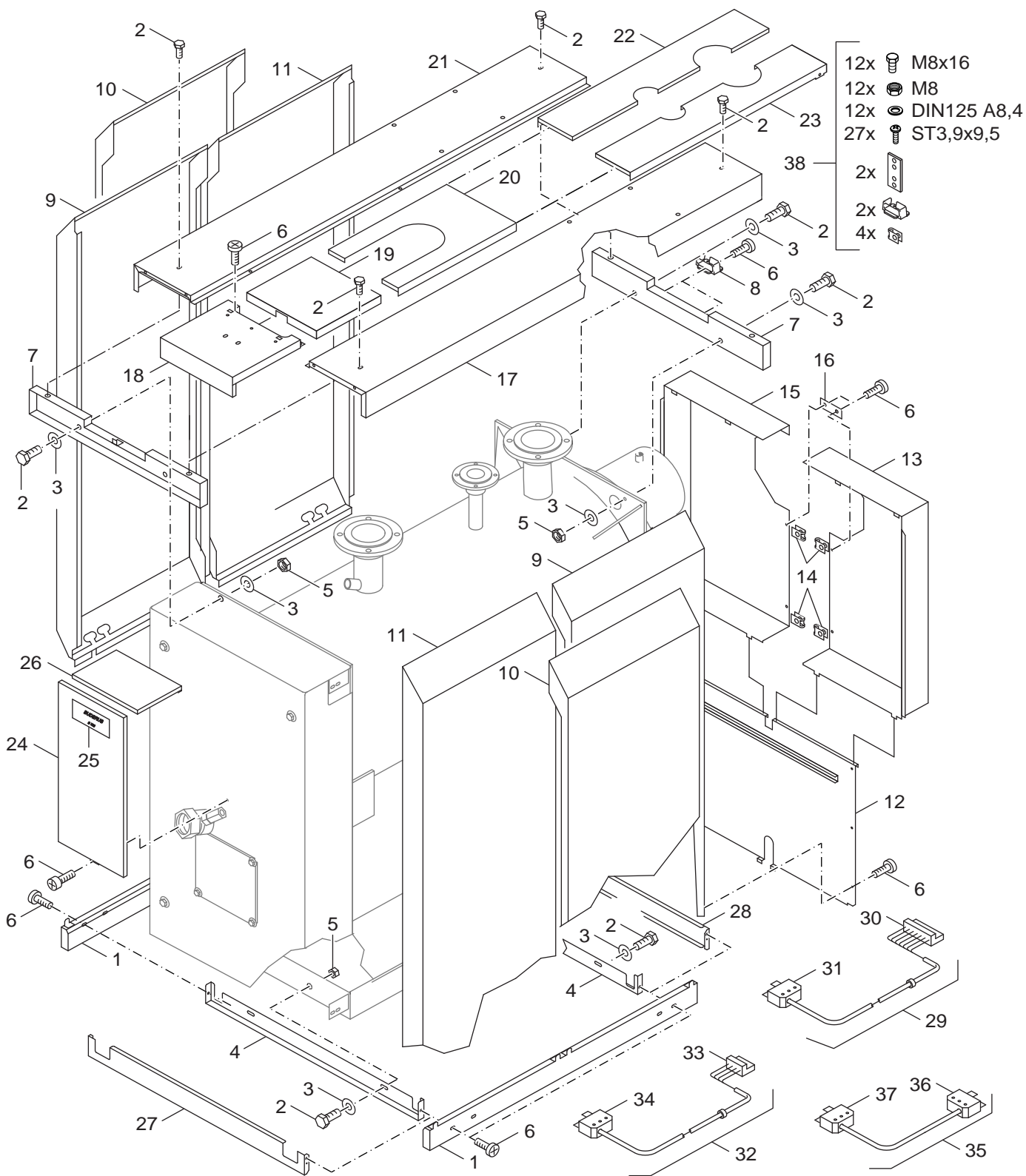
Logano S625/725, SE/SK625/725
Logano plus SE625/725

Pos	Bezeichnung description dénomination descrizioni benaming	Bestell-Nr. Ordering no. Numero de commande n° d'ordine Bestelnummer	S/SE/SK 625/725																	Bemerkungen Remarks Remarques Osservazioni Opmerkingen
17	Abdeckblech rechts S625 230- 310KW	5158478	■																	
17	Abdeckblech rechts S625 410- 530KW	5158482	■																	
17	Abdeckblech rechts S625 690kW	5158540	■																	
17	Abdeckblech rechts S725 870kW	5158542	■																	
17	Abdeckblech rechts S725-1070-1320kW	5158544	■																	
17	Abdeckblech rechts S725-1600kW	5785490	■																	
18	Haube vo S625-230/310/410/530	5158392	■																	
18	Haube vo S625-690 S725-870-1600	5158394	■																	
19	Haube mi S625-230-690	5158396	■																	
19	Haube mi S725-870-1600	5785420	■																	
20	Haube hi S625-230/310	5158410	■																	
20	Haube hi S625-410-530	5158412	■																	
21	Abdeckblech links S625 230-310KW	5158476	■																	
21	Abdeckblech links S625 410-530KW	5158480	■																	
21	Abdeckblech links S625 690kW	5158530	■																	
21	Abdeckblech links S725 870kW	5158532	■																	
21	Abdeckblech links S725 1070-1320kW	5158534	■																	
21	Abdeckblech links S725 1600kW	5785488	■																	
22	Haube hi li S625-690/S725-870 geteilt	5158564	■																	
22	Haube hi li S625-230/530 geteilt	5158568	■																	
22	Haube hi li S725-1070/1320 geteilt	5785542	■																	
22	Haube hi li S725-1600 geteilt	5785544	■																	
23	Haube hi re S625-690/S725-870 geteilt	5158566	■																	
23	Haube hi re S625-230/530 geteilt	5158570	■																	
23	Haube hi re S725-1070/1320 geteilt	5785548	■																	
23	Haube hi re S725-1600 geteilt	5785550	■																	
24	Blende ob I S625-230/310/410/530	5158428	■																	Geliefert <01.10.1996
24	Blende ob I S625-690/S725-870	5158434	■																	Geliefert <01.10.1996
24	Blende S625 230-530KW	5158500	■																	
24	Blende S625-690 S725-870	5158502	■																	
24	Blende S725-1070/1320	5158504	■																	
24	Blende S725-1600	5158506	■																	
24	Blende ob I S725-1070/1320	5785444	■																	Geliefert <01.10.1996
24	Blende ob I S725-1600	5785446	■																	Geliefert <01.10.1996
25	Geräteschild Logano SE625	67902832	■																	Geliefert >01.04.1999
25	Geräteschild Logano SE725	67902833	■																	Geliefert >01.04.1999
25	Geräteschild Logano SK625	67902835	■																	
25	Geräteschild Logano SK725	67902836	■																	Geliefert >01.04.1999
25	Geräteschild Logano plus SE625	67902850	■																	
25	Geräteschild Logano plus SE725	67902852	■																	
26	Blende ob II S625-690/S725-870	5158430	■																	Geliefert <01.10.1996
26	Blende ob II S625-230/310/410/530	5158432	■																	Geliefert <01.10.1996
26	Blende ob II S725-920/1350	5785440	■																	Geliefert <01.10.1996
27	Sockel vo lackiert S625-230/310	5158464	■																	
27	Sockel vo lackiert S625-410/530	5158466	■																	
27	Sockel vo lackiert S625-690/S725-870	5158468	■																	
27	Sockel vo lackiert S725-870	5785466	■																	
27	Sockel vo lackiert S725-1070/1320	5785468	■																	
27	Sockel vo lackiert S725-1600	5785470	■																	
28	Sockel hi lackiert S625-230/310	5158470	■																	
28	Sockel hi lackiert S625-410/530	5158472	■																	
28	Sockel hi lackiert S625-690, S725-870	5158474	■																	
Logano S625/725, SE/SK625/725																Verkleidung SE/SK 625/725				4
Logano plus SE625/725																Casing SE/SK 625/725 Carénage SE/SK 625/725 Rivestimento SE/SK 625/725 Bekleding SE/SK 625/725				

Ersatzteilliste
Spare parts list

Liste des pièces de rechange
Lista parti di ricambio

Onderdelenlijst

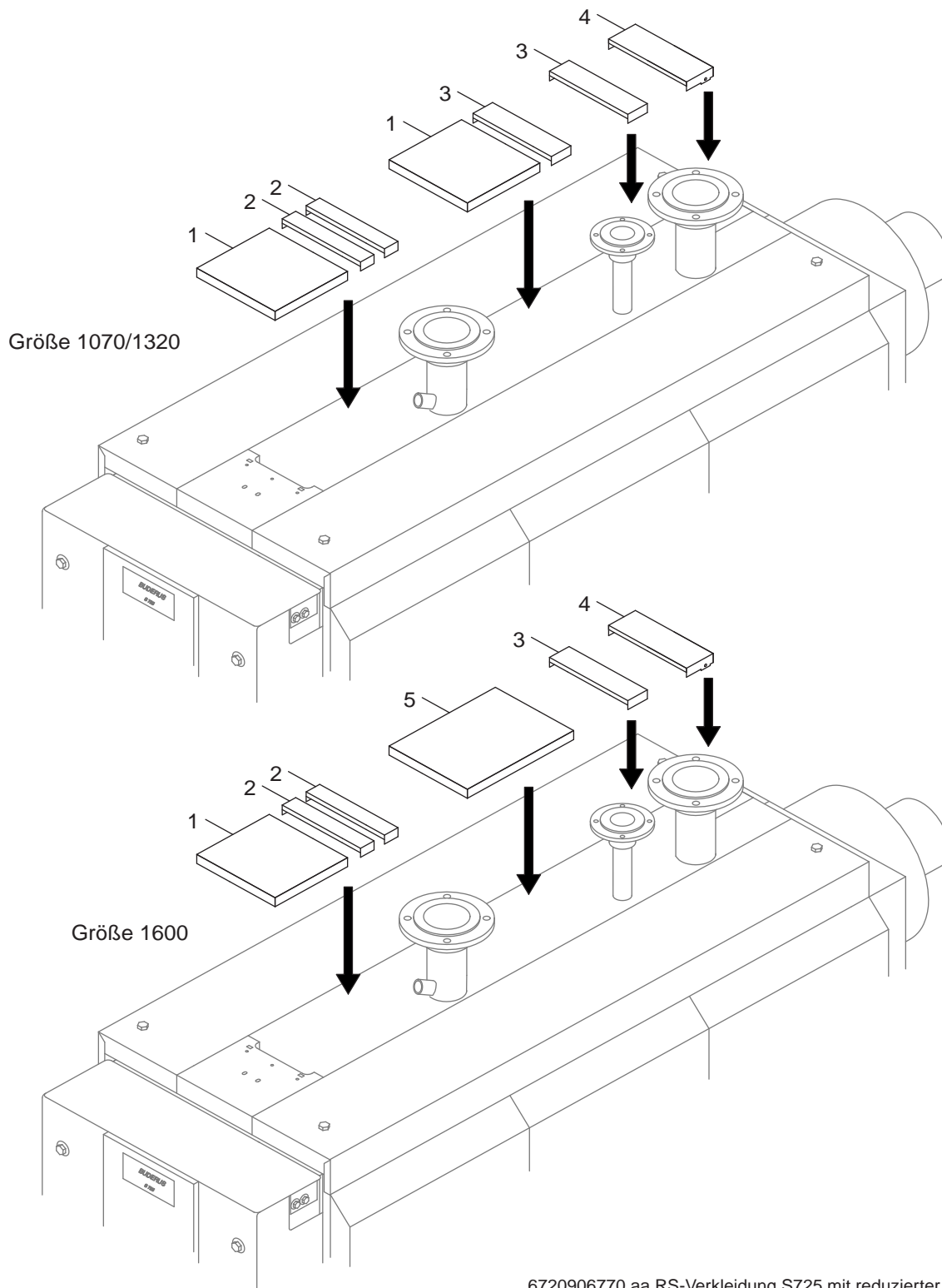


99907096.aa.RS-Verkleidung SE/SK625/725

4

Verkleidung SE/SK 625/725
Casing SE/SK 625/725
Carénage SE/SK 625/725
Rivestimento SE/SK 625/725
Bekleding SE/SK 625/725

Logano S625/725, SE/SK625/725
Logano plus SE625/725



5

Verkleidung S725 S
Casing S725 S
Carénage S725 S
Rivestimento S725 S
Bekleding S725 S

Logano S625/725, SE/SK625/725
Logano plus SE625/725

Ersatzteilliste
Spare parts list

Liste des pièces de rechange
Lista parti di ricambio


Onderdelenlijst

Hinweis!
Bei Bedarf von Pos. 15 für Verkleidungen
geliefert bis 30.04.1998 müssen Pos. 13+14
mitbestellt werden.

Notes for the user!
The position 13+14 must be ordered with,
when required by position 15 for casing
supplied till 30.04.1998

15

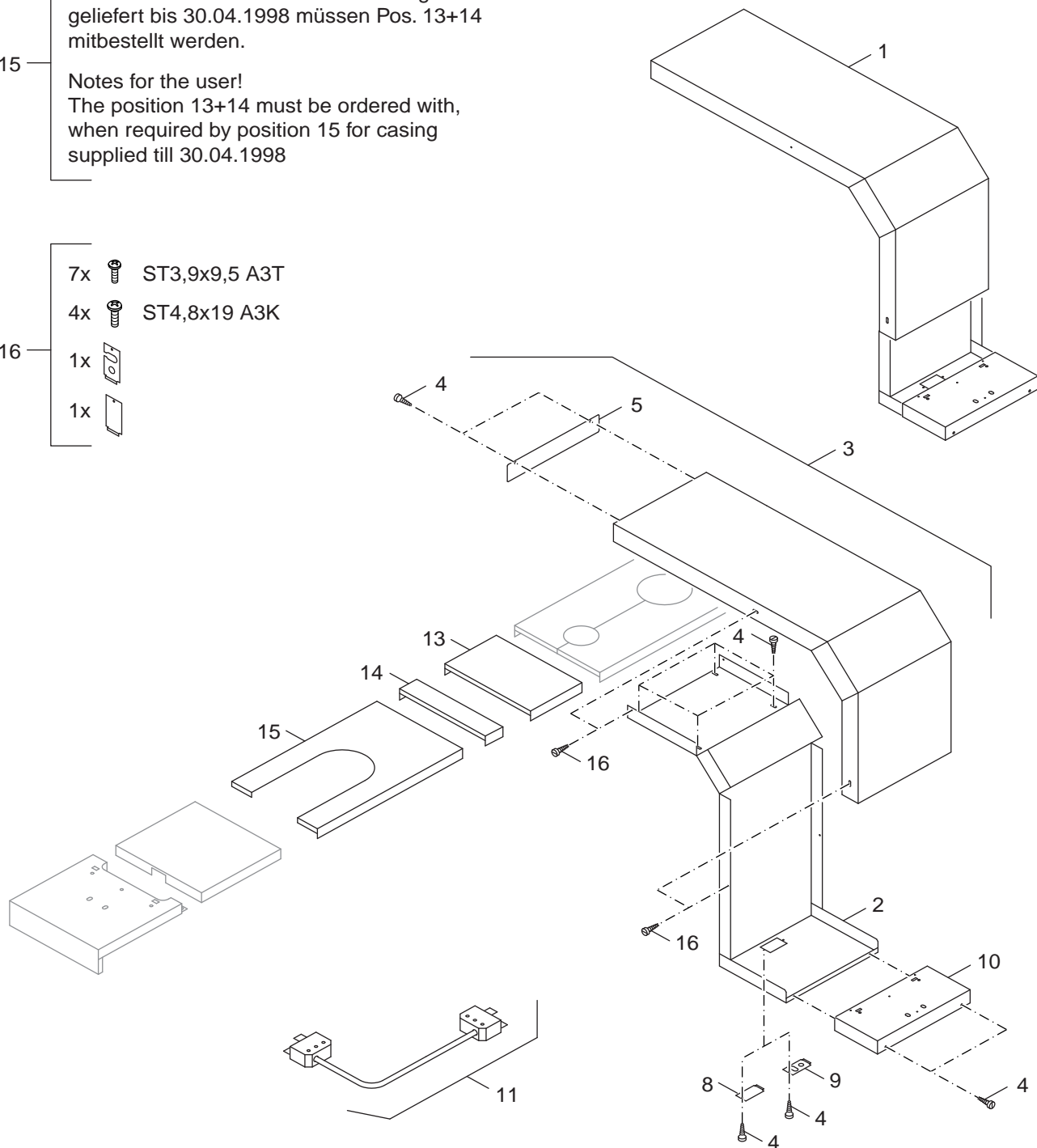
16

7x  ST3,9x9,5 A3T

4x  ST4,8x19 A3K

1x 

1x 

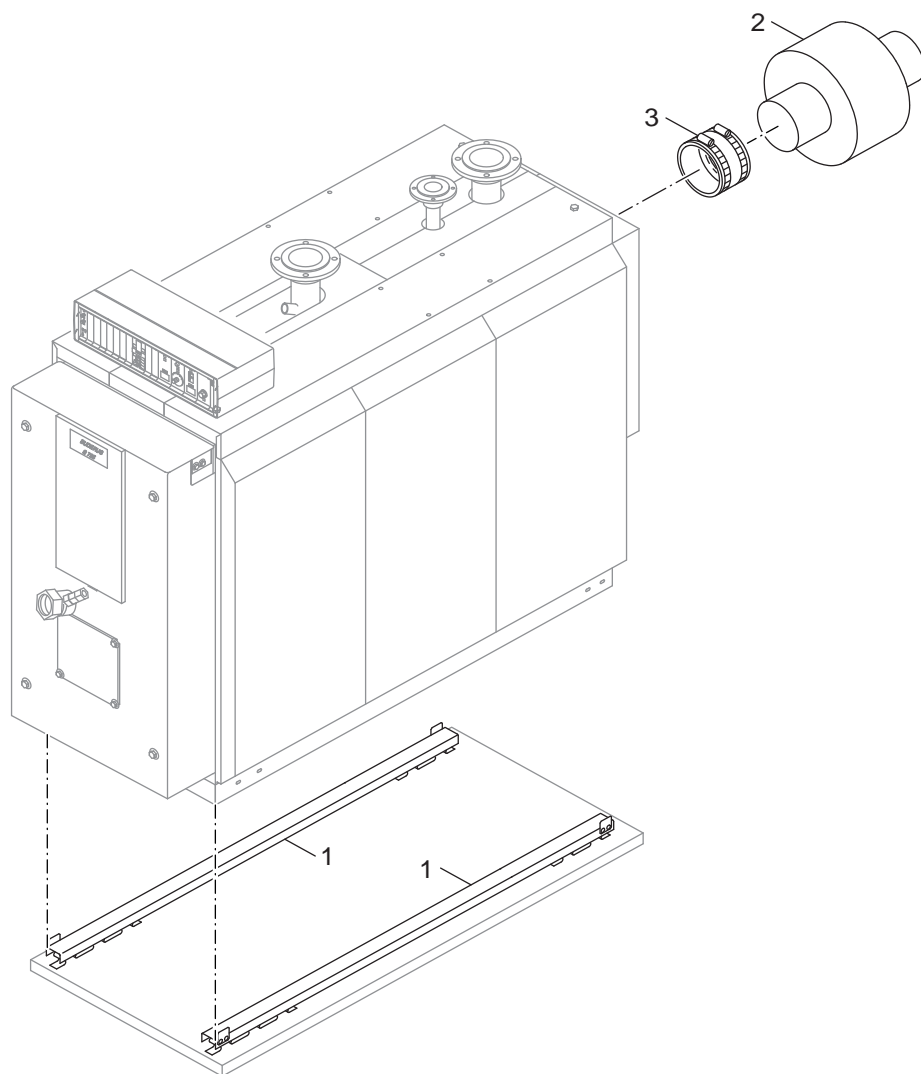


99902345.aa.RS-Träger für Regelgerät HS4311/4312/4212

6

Verkleidung Träger Regelgerät S625/725
casing fixing bracket control unit S625
Carénage Plaque de jonction S625/725
Rivestimento Supporto UnitÃ di comando
Bekleding Draaier Sturing S625/725

Logano S625/725, SE/SK625/725
Logano plus SE625/725



99907097.aa.RS-Schalldämmung SE/SK625/725

7

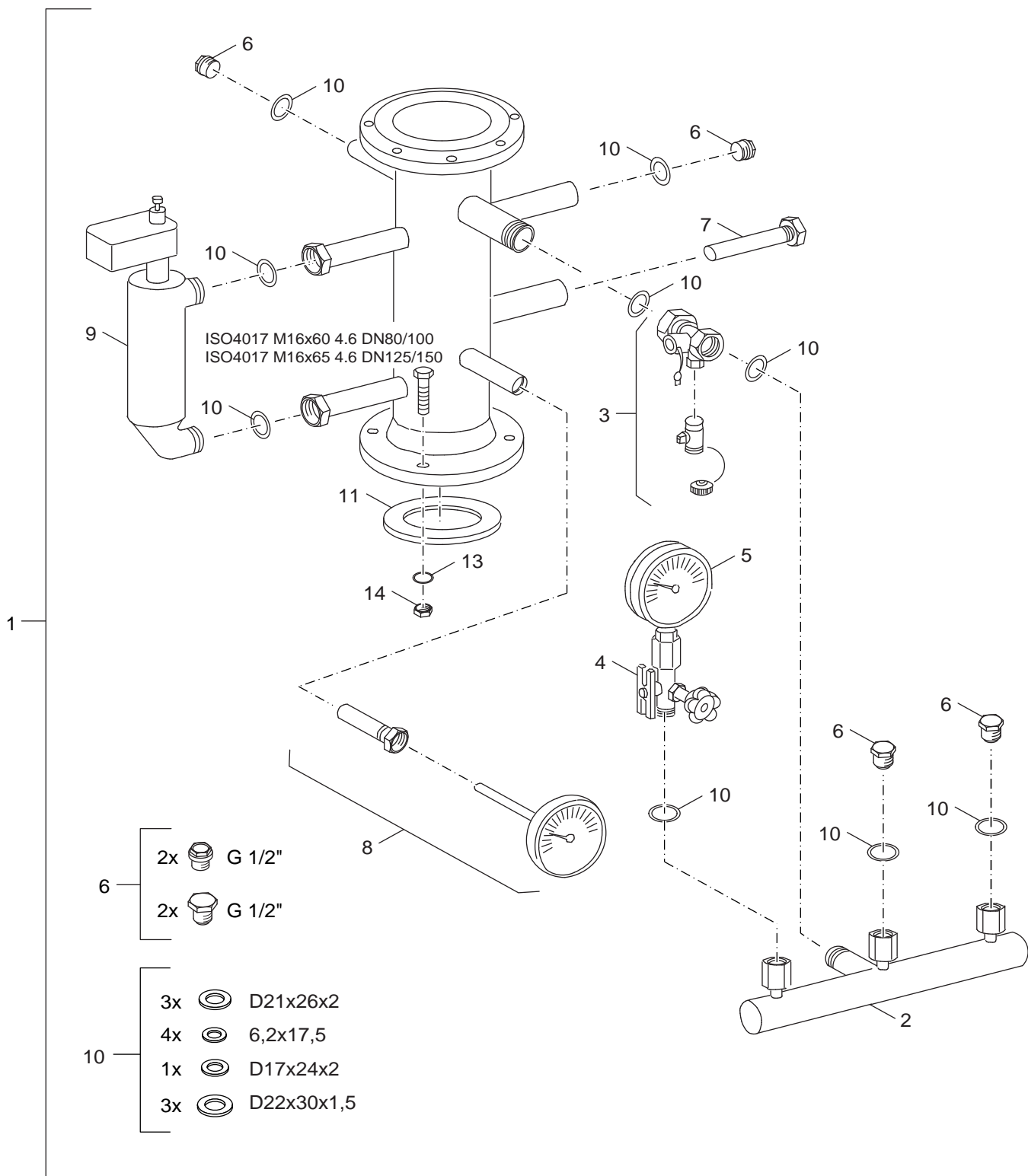
Schalldämmung SE/SK 625/725
sound absorption SE/SK 625/725
isolation acoustique SE/SK 625/725
isolamento acustico SE/SK 625/725
sound absorption SE/SK 625/725

Logano S625/725, SE/SK625/725
Logano plus SE625/725

Ersatzteilliste
Spare parts list

Liste des pièces de rechange
Lista parti di ricambio

Onderdelenlijst



99902349.aa.RS-Sicherheitsarmaturengruppe SE/SK625/725

8

Kessel-Sicherheits-Armaturengr S625/725
Boiler safety valve set S625/725
Groupe de robinets de sécurité S625/725
Boiler safety valve set S625/725
Boiler safety valve set S625/725

Logano S625/725, SE/SK625/725
Logano plus SE625/725

Übersetzungsliste List of translations		Liste des traductions Traduzione delle descrizioni		Vertalinglijst
Pos	Description	Denomination	Descrizione	Benaming
1	Element of construction	Groupe de construction	Gruppo di costruzione	Montagegroep
1	Boiler block SK725 870kW	CORPS CHAUD SK 725-870 KW	Kesselblock SK725-870	Kesselblock SK725-870
2	Packing cords 20x25x3120mm	JOINT PORTE 20X25X3120MM	Cordone di tenuta 20x25x3120mm	Afdichtkoord 20x25x3120mm
3	Sensor well R 3/4"x150mm long	DOIGT DE GANT R3/4x150mm	Pozzetto ad immersione R 3/4"x150mm	Dompelhuls R 3/4"x150mm
4	Turbulator 1350/1710mm long S625	Turbulateur 1350/1710 mm S625	Turbolatore 1350/1710 mm S625	Turbulator 1350/1710 mm S625
5	Thermal insulation Part 2 S725 1070-1320	Isolation 2 S725 1070-1320KW	Isolamento 2 S725 1070-1320KW	Isolatie 2 S725 1070-1320KW
6	Retaining spring (10Pc)	RESSORTS DE RETENUE D 0.8 (10x)	Molla di tenuta (10x)	Borgveer (10x)
7	Thermal insulation Part 1 S625 690KW	Isolation 1 S625 690KW	Isolamento 1 S625 690KW	Isolatie 1 S625 690KW
8	Thermal insulation Part 5 S625 410-530KW	Isolation 5 S625 410-530KW	Isolamento 5 S625 410-530KW	Isolatie 5 S625 410-530KW
9	Thermal insulation Part 3 S625 690KW	Isolation 3 S625 690KW	Isolamento 3 S625 690KW	Isolatie 3 S625 690KW
10	Thermal insulation Part 4 S625 410-530KW	Isolation 4 S625 410-530KW	Isolamento 4 S625 410-530KW	Isolatie 4 S625 410-530KW
	Composit-pipe SE625-230/310KW	Composit-Tube S/SE625 230-310kW	Composit-Tubo S/SE625 230-310kW	Composit-Pijp S/SE625 230-310kW
	Composit-pipe SE625-410/530/690	Composit-Tube S/SE625 410-690kW	Composit-Tubo S/SE625 410-690kW	Composit-Pijp S/SE625 410-690kW
	Composit-pipe SE725-870KW	Composit-Tube S/SE725 870kW	Composit-Tubo S/SE725 870kW	Composit-Pijp S/SE725 870kW
	Composit-pipe SE725-1070/1320KW	Composit-Tube S/SE725 1070-1320kW	Composit-Tubo S/SE725 1070-1320kW	Composit-Pijp S/SE725 1070-1320kW
	Composit-pipe SE725-1600KW	Composit-Tube S/SE725 1600kW	Composit-Tubo S/SE725 1600kW	Composit-Pijp S/SE725 1600kW
	Rep-set angle sheet S625-230/310	Reparation-Set Equerre Tôle S625-230/310	Riparazione-Set Angolo Lamierino 230/310	Repair-Set Hoeksteen Blik S625-230/310
	Rep-set angle sheet S625-410/530	Reparation-Set Equerre Tôle S625-410/530	Riparazione-Set Angolo Lamierino 410/530	Repair-Set Hoeksteen Blik S625-410/530
	Rep-set angle sheet S625-690/S725-870	Reparation-Set Equerre Tôle 690/870	Riparazione-Set Angolo Lamierino 690/870	Repair-Set Hoeksteen Blik 690/870
	Rep-set angle sheet S725-1070/1320	Reparation-Set Equerre Tôle 1070/1320	Riparazione-Set Angolo Lamierino	Repair-Set Hoeksteen Blik S725-1070/1320
	Rep-set angle sheet S725-1600	Reparation-Set Equerre Tôle S725-1600	Riparazione-Set Angolo Lamierino 1600	Repair-Set Hoeksteen Blik S725-1600
2	Element of construction	Groupe de construction	Gruppo di costruzione	Montagegroep
3	Hex nut ISO4032 M8 8 A3K	Ecrou 6 pans ISO4032 M8 8 A3K	Dado esagonale ISO4032 M8 8 A3K	Zeskantmoer ISO4032 M8 8 A3K
4	Washer DIN125 A3K (10x)	Rondelle plate DIN125 A3K (10x)	Rondella DIN125 A3K (10x)	Onderlegging DIN125 A3K (10x)
6	Clean-out cover D178mm	Couvercle de trappe de ramonage D178mm	Coperchio di pulizia D178mm	Reinigingsdeksel D178mm
7	Gasket D148x132x8mm GP	Joint D148x132x8mm GP	Guarnizione D148x132x8mm GP	Pakking D148x132x8mm GP
9	Flue gas header SE625 A 230kW	Buse de fumée compl. SE625 A 230kW	Collettore combusti SE625 A 230kW	Rookgascollector SE625 A 230kW
12	Flue gas header SE625 A 230-310kW	Buse de fumée avant SE625 A 230-310kW	Collettore combusti SE625 A 230-310kW	Rookgascollector SE625 A 230-310kW
13	Washer DIN125 10,5x2 (10x)	Rondelle plate DIN125 10,5x2 (10x)	Rondella DIN125 10,5x2 (10x)	Onderlegging DIN125 10,5x2 (10x)
14	Hex nut ISO4032 M10 8 A3K	Ecrou 6 pans ISO4032 M10 8 A3K	Dado testa esagonale ISO4032 M10 8 A3K	6kt-moer ISO4032 M10 8 A3K
3	Element of construction	Groupe de construction	Gruppo di costruzione	Montagegroep
1	Burner door S625 230-310KW	Porte de brûleur S625 230-310KW	Porta del bruciatore S625 230-310KW	Branderdeur S625 230-310KW
3	Male screw connection GE 10-Ir Ermeto	RACCORD ERMETO G10 LR, Ermeto	RACCORD ERMETO G10-LR, Ermeto	Koppeling met binnendraad G10-LR, Ermeto
8	Self-tapping screw DIN7516 A M5x10 A3K	ECROU DIN7516 A M5X10 A3K	Testa esagonale DIN7516 A M5x10 A3K	Self-tapping screw DIN7516 A M5x10 A3K
9	Union nut G 1 1/2"x19 MS	ECROU DE RACCORD G1 1/2" X 19Ms	Dado G 1 1/2"x19 Ms	Wartelmoer G 1 1/2"x19 Ms
10	Sealing ring DIN7603-a 50x57x2	JOINT VERRE VISEE CHAUD SK715 50X57	O-ring DIN7603-a 50x57x2	Afdichtring DIN7603-a 50x57x2
11	Glass pane D55x5 repl pack	Hublot D55x5	Vetrino D55x5	Kijkglas D55x5
12	Packing cords D30x3120mm	CORDON D'ETANCHEITE D30x3120mm	Cordone di tenuta D30x3120mm	Afdichtkoord D30x3120mm
13	Washer DIN125 A17 A3K	RONDELLE DIN125 A17 A3K	Disco DIN125 A17 A3K	Ring DIN125 A17 A3K
14	Screw DIN6921 M10x25 (10x)	Vis DIN6921 M10x25 (10x)	Vite DIN6921 M10x25 (10x)	Schroef DIN6921 M10x25 (10x)
15	Hinge part left/rights/top/bottom	Charnière SE/SK 625-725	Cerniera SE/SK 625-725	Scharnier SE/SK 625-725
16	Washer DIN7349 17 A3K (10x)	Rondelle plate DIN7349 17 A3K (10x)	Rondella DIN7349 17 A3K (10x)	Onderlegging DIN7349 17 A3K (10x)
17	Hex bolt ISO4014 M16x280mm 8.8	Vis 6 pans ISO4014 M16x280mm 8.8	Vite testa esagonale ISO4014 M16x280mm	Schroef ISO4014 M16x280mm 8.8
18	Gasket burner plate S725 size 1070-1600	Joint plaque brûleur S725 1070-1600kW	Guarnizione Piastra bruciatore 1070-1600	Pakking Branderplaat S725 1070-1600kW
19	Burner plate (dummy) 10x338x338mm	PLAQUE BRULEUR (PLEINE) 10x338x338mm	Piastra bruciatore 10x338x338mm	blind branderplaat 10x338x338mm
21	Screw Hexagon-head ISO4017 M12x45 (10x)	Vis à tête hexagonale M12x45 (10x)	Vite ISO4017 M12x45 (10x)	Schroef ISO4017 M12x45 (10x)
22	Washer DIN125-A13-A3K	Rondelle DIN125-A13-A3K	Disco DIN125-A13-A3K	Ring DIN125-A13-A3K
23	Insulating ring burner door S625	Bague d'isolation Porte de brûleur S625	Isolamento anulare Porta del bruciatore	Isolatie ring Branderdeur S625 230-310kW
	Paint spray RAL5015 150ml blue	PEINTURE BOMBE RAL 5015 150ml bleu	Bomboletta Spray RAL 5015 150ml azzuro	Lack blauw RAL5015 Sprühdose 150ml
	Repair substance Carbofil 300ml	Masse de réparation Carbofil 130ml	Reparaturmasse Carbofil 300 ml	Reparaturmasse Carbofil 300 ml
	Repair substance Calde Stix14 G3	Masse de réparation Calde Stix14 G3	Reparaturmasse Calde Stix14 G3	Reparaturmasse Calde Stix14 G3
4	Element of construction	Groupe de construction	Gruppo di costruzione	Montagegroep
1	Cover bottom right/left S625 230-310KW	SOCLE BAS S625/230-310KW	Mascherina/Pannello sotto S625 230-310	Afdekplaat Onder S625 230-310KW
2	Hex bolt ISO4017 M8x16 8.8	Ecrou 6 pans ISO4017 M8x16 8.8	Vite ISO4017 M8x16 8.8	Schroef ISO4017 M8x16 8.8
3	Washer DIN125 A3K (10x)	Rondelle plate DIN125 A3K (10x)	Rondella DIN125 A3K (10x)	Onderlegging DIN125 A3K (10x)
4	Tie-bar bottom front/rear S625 230-310kW	Traverse inférieur avant et arrière S625	Traversa sotto S625 230-310kW	Vangschal Onder S625 230-310kW
5	Hex nut ISO4032 M8 8 A3K	Ecrou 6 pans ISO4032 M8 8 A3K	Dado esagonale ISO4032 M8 8 A3K	Zeskantmoer ISO4032 M8 8 A3K

Übersetzungsliste List of translations		Liste des traductions Traduzione delle descrizioni		Vertalinglijst	
Pos	Description	Denomination	Descrizione	Benaming	
6	Pan-head screw ST3,9x9,5 A3T (10x)	Vis à tête plate ST3,9 (10x)	Vite a testa piana ST3,9x9,5 (10x)	Schroef met vlakke kop ST3,9x9,5 (10x)	
7	Tie-bar top front/rear S625 230-310KW	Traverse supérieur avant et arrière	Traversa sopra S625 230-310KW	Vangschaal Boven S625 230-310KW	
8	Cable clip	ATTACHE RAPIDE	Angolare	Houder	
9	Side panel right/left S625 230-310kW	Paroi latérale droite gauche S625	Parete laterale destra sinistra S625	Zijwand Rechts Links S625 230-310kW	
10	Side panel middle S625 410-530KW	HABIL LAT INTERM S625 410-530KW	Parete laterale intermedio S625 410-530	Zijwand midden S625 410-530KW	
11	Side panel right/left S625 230-310kW	Panneau lat. avant droit/arrière gauche	Parete laterale destra sinistra S625	Zijwand Rechts Links S625 230-310kW	
12	Rear panel bottom S625 230-310KW	Panneau arrière inférieur S625 230-310	Parete posteriore sotto S625 230-310KW	Achterwand Onder S625 230-310KW	
13	Rear panel top right S625 230-310KW	Panneau arrière supérieur droit S625	Parete posteriore sopra destra S625	Achterwand Boven Rechts S625 230-310KW	
14	Snap nut 3.9-A3K-SNU5743	ECROU 3,9-A3K-SNU5743	Chiocciola 3,9-A3K-SNU5743	Clip 3,9-A3K-SNU5743	
15	Rear panel top left S625 230-310KW	HABIL ARR HAUT GAUCHE S625 230-310KW	Parete posteriore sopra sinistra S625	Achterwand Boven Links S625 230-310KW	
16	Connection tongue 80x30x0,75mm	Barreau de jonction 80x30x0,75mm	Linguetta 80x30x0,75mm	Klembeugel 80x30x0,75mm	
17	Facing panel right S625 230-310KW	Tôle de protection droit S625 230-310KW	Lamiera di protezione destra S625	Afdekplaat Rechts S625 230-310KW	
18	Hood front S625 230-530KW	Dessus avant S625 230-530KW	Coperchio anteriore S625 230-530KW	Afdekkap Voor S625 230-530KW	
19	Hood middle S625 230-690kW	Dessus interm. S625 230-690kW	Coperchio intermedio S625 230-690kW	Afdekkap midden S625 230-690kW	
20	Hood rear S625 230- 310kW	Dessus arrière S625 230- 310kW	Coperchio posteriore S625 230- 310kW	Afdekkap Achter S625 230- 310kW	
21	Facing panel left S625 230-310KW	Tôle de protection gauche S625 230-310KW	Lamiera di protezione sinistra S625	Afdekplaat Links S625 230-310KW	
22	Hood rear left S625/S725 690-870kW	Dessus arrière gauche S625/S725	Coperchio posteriore sinistra S625/S725	Afdekkap Achter Links S625/S725	
23	Hood rear right S625 690kW	Dessus arrière droit S625 690kW	Coperchio posteriore destra S625 690kW	Afdekkap Achter Rechts S625 690kW	
24	Covers burner door S625 210-480KW	Cache pte brûl.avant (livré jusqu'au	Pannello Porta del bruciatore S625 210-	Afdekplaat Branderdeur S625 210-480KW	
25	Badge Logano SE625	Plaque signalétique Logano SE625	Targhetta caldaia Logano SE625	Toestelplaat Logano SE625	
26	Cover top S625/S725 600-750KW	Cache pte brûl.supérieur (livré jusqu'au	Pannello sopra S625/S725 600-750KW	Afdekplaat Boven S625/S725 600-750KW	
27	Cover front S625 230-310KW	Cache avant S625 230-310KW	Pannello anteriore S625 230-310KW	Afdekplaat Voor S625 230-310KW	
28	Cover rear S625 230-310KW	Cache arrière S625 230-310KW	Pannello posteriore S625 230-310KW	Afdekplaat achter S625 230-310KW	
29	Burner connecting cable 5000mm long	Câble de raccord. 5000mm	Linea del bruciatore 5000mm	Branderleiding 5000mm	
30	Connecting terminal 7-pol green	Borne de connexion 7- pôles vert	Morsetto di collegamento 7-bipol. verde	Afsluitklem 7- polig groen	
31	Connector part ST18/7 silver-plated	CONNECT ST18/7 ARGENTE	Connessione a spina ST18/7 argentata	Stekkerdeel ST18/7 verzilverd	
32	Burner cable 4300mm + strain relief	Câble de brûleur 4300mm + Sert-cable	Linea del bruciatore4300mm+Fermo antitr.	Branderleiding 4300mm + Trekontlasting	
33	Connecting terminal 4-pol white	Connecteur 2 allures blanche 4 poles V2	Morsetto di collegamento 4-bipolare	Afsluitklem 4-polig wit	
34	Connector part 4-polig green	Connecteur 4 poles vert	Spina 4-bipolare verde	Stekker 4-polig groen	
35	Burner cable extension 700mm long	Rallonge câble brûleur long.700mm	Linea del bruciatore Prolunga 700mm	Branderleiding Verlenging 700mm	
36	Female contact ST18/4 with strain relief	Douille ST 18/4 + Sert-cable	Boccola ST 18/4 + Fermo antitrazione	Huls ST 18/4 + Trekontlasting	
37	Connector part 4-polig green	Connecteur 4 poles vert	Spina 4-bipolare verde	Stekker 4-polig groen	
38	Installation material S625/725	MATERIEL MONTAGE HABIL S625/725	Materiale per il montaggio S625/725	Montagemateriaal S625/725	
	Paint spray RAL5015 150ml blue	PEINTURE BOMBE RAL 5015 150ml bleu	Bomboletta Spray RAL 5015 150ml azzuro	Lack blau RAL5015 Sprühdose 150ml	
	Paint spray RAL5013 400ml cobalt blue	Peinture Bombe RAL5013 400ml	Bomboletta Spray RAL 5013 400ml	Lak RAL5013Sprühdose 400ml	
	Cable entry (slotted) (1x)	PASSE CABLE BLEU CIEL RAL 5015 (1x)	Passacavo (blu) (1x)	Kabeldoorvoer met sleuven (blauw) (1x)	
5	Element of construction	Groupe de construction	Gruppo di costruzione	Montagegroep	
1	Hood middle S625 230-690kW	Capot milieu S625 230-690kW	Coperchio intermedio S625 230-690kW	Afdekkap midden S625 230-690kW	
2	Hood rear part C S625/S725	Capot arrière Partie C S625/S725	Coperchio posteriore Parte C S625/S725	Afdekkap Achter Deel C S625/S725	
3	Hood rear part B S625/S725	Capot arrière Partie B S625/S725	Coperchio posteriore Parte B S625/S725	Afdekkap Achter Deel B S625/S725	
4	Hood rear S725 1070-1600kW	Capot arrière S725 1070-1600kW	Coperchio posteriore S725 1070-1600kW	Afdekkap Achter S725 1070-1600kW	
5	Hood middle S725 870-1600kW	Capot milieu S725 870-1600kW	Coperchio intermedio S725 870-1600kW	Afdekkap midden S725 870-1600kW	
6	Element of construction	Groupe de construction	Gruppo di costruzione	Montagegroep	
1	Side control unit support for Logamatic	SUPPORT LATERAL POUR REGULATION 4000	Supporto Quadro comandi 4212/4311/HS4312	Houder Schakelkast 4212/4311/HS 4312	
2	Bearing arm for control panel	Plaque de jonction de base	Supporto sotto Apparecchio di regolazion	Draaier Onder Regel en best. app.	
3	Cover	Couvercle	Coperchio	Afdekking	
4	Pan-head screw ST3,9x9,5 A3T (10x)	Vis à tête plate ST3,9 (10x)	Vite a testa piana ST3,9x9,5 (10x)	Schroef met vlakke kop ST3,9x9,5 (10x)	
5	Facing plate for bracket control panel	Tôle de protection	Lamierina di protezione	Afdekplaat	
8	Facing panel cable entry (blue)	Tôle de protection Passe-câble (bleu)	Lamierina di protezione Passacavo (blu)	Afdekplaat kabeldoorvoer (blauw)	
9	Cable entry (slotted) (1x)	PASSE CABLE BLEU CIEL RAL 5015 (1x)	Passacavo (blu) (1x)	Kabeldoorvoer met sleuven (blauw) (1x)	
10	Hood for control panel HS 4311/4312	Capot HS 4311/4312	Coperchio HS 4311/4312	Afdekkap HS 4311/4312	
11	Burner wire 8M	CABLE BRUL 2 ALLURES 8M	Burner wire 8M	Branderkabel 8M - 2 Brandertrap	
13	Hood rear part B S625/S725 size 690-1600	Dessus partie B S625/S725 690-1600KW	Coperchio posteriore S625/S725 690-1600	Afdekkap Achter B S625/S725 690-1600KW	
14	Hood rear part C S625/S725 size 690-1600	Dessus partie C S625/S725 690-1600KW	Coperchio posteriore S625/S725 690-1600	Afdekkap Achter C S625/S725 690-1600KW	
15	Hood rear part A S625 690kW	Dessus arrière part.A S625-690 compl.	Coperchio posteriore A S625 690kW	Afdekkap Achter A S625 690kW	
16	Installation material support for	matériel de montage Plaque de jonction	materiale per il montaggio Supporto sott	Montagemateriaal Draaier Onder Regel	

Bosch Thermotechnik GmbH
Sophienstraße 30-32
D-35576 Wetzlar
www.buderus.de

Buderus